

Scaled data based on original data using
LM-79-08 Approved Method: Electrical and Photometric Measurements of Solid-State
Lighting Products

Test Report Prepared for

Cooper Lighting Solutions

(formerly Eaton)

Brand: NEO-RAY

Report Number: P331774-935

Luminaire Tested: **S122RDIW-S290D970U935-4F0-1E-UDD-A1**

Issue Date: 3/3/2020

Test Information

Test Method: LM-79-08
Report Number: P331774-935
REPORT IS SCALED FROM IESNA LM-79-08 TEST DATA (G3-1807-864-8,
Test Lab: INNOVATION CENTER
Issue Date: 3/3/2020
Manufacturer: COOPER LIGHTING SOLUTIONS (FORMERLY EATON)
Product Line: NEO-RAY
Catalog Number: S122RDIW-S290D970U935-4F0-1E-UDD-A1
Description: DEFINE 2 DIRECT-INDIRECT WALL MOUNT LED LUMINAIRE
DOWNLIGHT 290 LUMENS PER FOOT, ASYMMETRIC DIFFUSER, REGRESSED HOUSING
UPLIGHT 970 LUMENS PER FOOT, FLUSH SATIN WHITE DIFFUSER
Light Source: -
Ballast/Driver: ELECTRONIC DRIVER

Summary

Lumens per Lamp: N/A
Luminaire Lumens: 3866.5 lumens
Efficiency: N/A
Efficacy: 101.7 lumens/watt
Spacing Criteria (0/90/45): 0.86 / 1.16 / 1.02
Luminous Opening: Rectangular (W 4' x L: 0.17' x H: 0')
CIE Type: Semi-Indirect

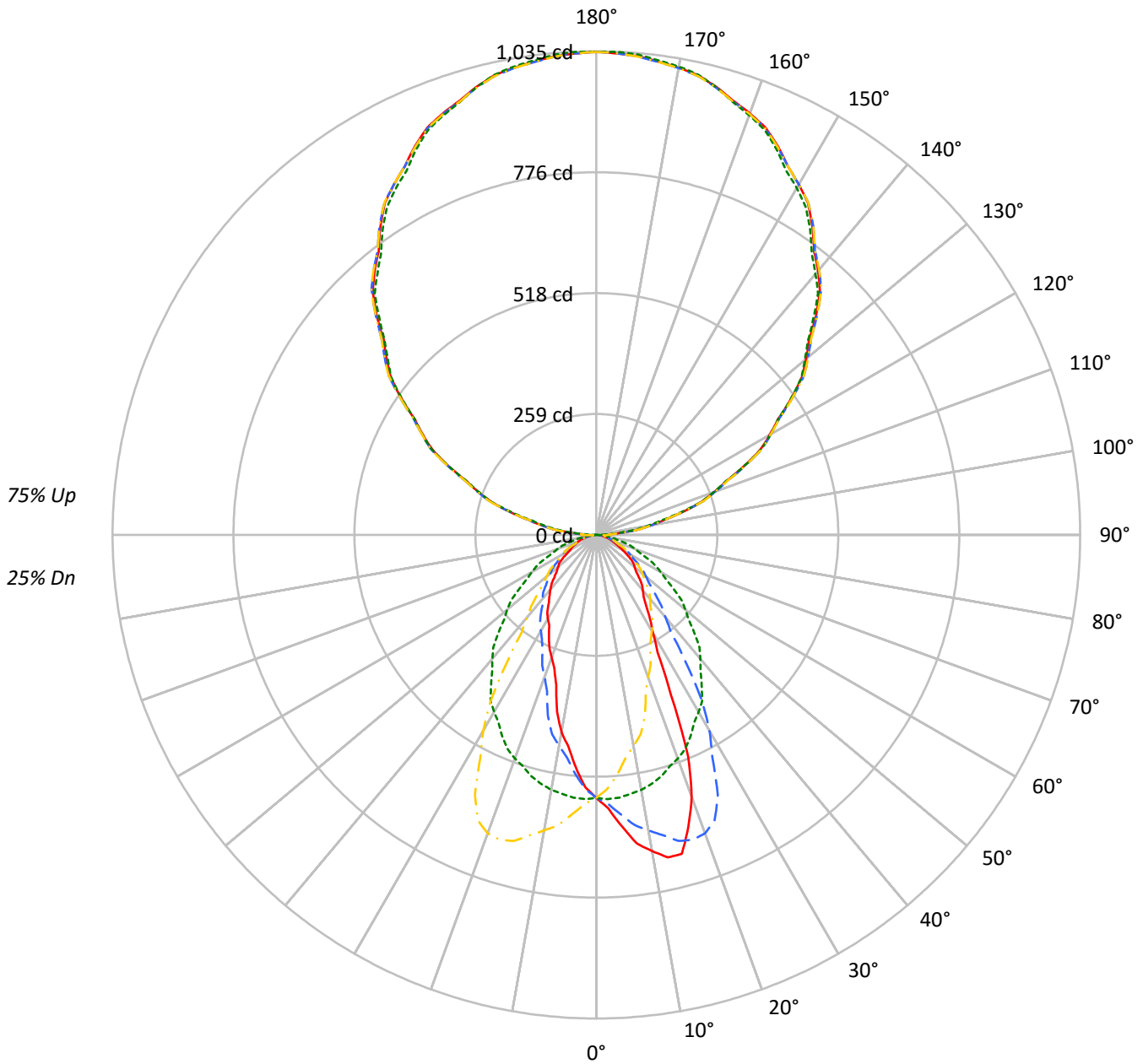
Input Watts (W): 38
Input Voltage (V): 120
Input Current (Ain): NR
Voltage Rise (V): NR
Power Factor: NR
Total Harmonic Distortion (THDi): NR
Frequency (hertz): 60
Stabilization Time: NR
Operation Time: NR
Ambient Temperature (°C): NR
Test Distance: 25 FT



TEST NUMBER: P331774-935

CATALOG NUMBER: S122RDIW-S290D970U935-4F0-1E-UDD-A1

Luminous Intensity Polar Plot



— 0°-180° - - 45°-225° - - - 90°-270° - - - 135°-315°



TEST NUMBER: P331774-935

CATALOG NUMBER: S122RDIW-S290D970U935-4F0-1E-UDD-A1

COEFFICIENT OF UTILIZATION - ZONAL CAVITY METHOD:

| | | | | | | | | | | | | | | | | | | | | | | |
|-----|-----|-----|-----|-----|----|----|----|----|----|----|----|----|----|----|----|----|----|----|----|----|----|---|
| RF | 20 | | | | | 20 | | | | | 20 | | | | | 20 | | | | | 20 | |
| RC | 80 | | | | | 70 | | | | | 50 | | | | | 30 | | | | | 10 | 0 |
| RW | 70 | 50 | 30 | 10 | 70 | 50 | 30 | 10 | 50 | 30 | 10 | 50 | 30 | 10 | 50 | 30 | 10 | 50 | 30 | 10 | 0 | |
| RCR | | | | | | | | | | | | | | | | | | | | | | |
| 0 | 101 | 101 | 101 | 101 | 90 | 90 | 90 | 90 | 70 | 70 | 70 | 51 | 51 | 51 | 33 | 33 | 33 | 25 | | | | |
| 1 | 93 | 89 | 85 | 82 | 82 | 79 | 76 | 73 | 61 | 59 | 58 | 45 | 44 | 43 | 30 | 29 | 29 | 22 | | | | |
| 2 | 85 | 78 | 72 | 67 | 75 | 70 | 65 | 61 | 54 | 51 | 48 | 40 | 38 | 36 | 27 | 26 | 25 | 19 | | | | |
| 3 | 77 | 69 | 62 | 57 | 69 | 62 | 56 | 51 | 48 | 44 | 41 | 36 | 33 | 31 | 24 | 23 | 22 | 17 | | | | |
| 4 | 71 | 61 | 54 | 48 | 63 | 55 | 49 | 44 | 43 | 39 | 35 | 32 | 29 | 27 | 22 | 20 | 19 | 15 | | | | |
| 5 | 65 | 54 | 47 | 41 | 58 | 49 | 42 | 38 | 39 | 34 | 31 | 29 | 26 | 24 | 20 | 18 | 17 | 13 | | | | |
| 6 | 60 | 49 | 41 | 36 | 53 | 44 | 37 | 33 | 35 | 30 | 27 | 26 | 23 | 21 | 18 | 16 | 15 | 12 | | | | |
| 7 | 56 | 44 | 37 | 31 | 49 | 40 | 33 | 29 | 32 | 27 | 24 | 24 | 21 | 19 | 17 | 15 | 14 | 11 | | | | |
| 8 | 52 | 40 | 33 | 28 | 46 | 36 | 30 | 26 | 29 | 24 | 21 | 22 | 19 | 17 | 16 | 14 | 12 | 10 | | | | |
| 9 | 48 | 36 | 29 | 25 | 43 | 33 | 27 | 23 | 26 | 22 | 19 | 20 | 17 | 15 | 14 | 13 | 11 | 9 | | | | |
| 10 | 45 | 33 | 27 | 22 | 40 | 30 | 24 | 20 | 24 | 20 | 17 | 19 | 16 | 14 | 13 | 12 | 10 | 8 | | | | |

AVERAGE LUMINANCE (cd/sqm):

| | 0° | 90° | 180° | 270° |
|-----|-------|------|------|------|
| 0° | 9087 | 9087 | 9087 | 9087 |
| 5° | 10149 | 9144 | 8109 | 9144 |
| 10° | 11262 | 9081 | 7029 | 9081 |
| 15° | 11814 | 8948 | 5538 | 8948 |
| 20° | 10244 | 8751 | 4792 | 8751 |
| 25° | 6716 | 8480 | 4277 | 8480 |
| 30° | 4521 | 8153 | 3872 | 8153 |
| 35° | 3662 | 7740 | 3493 | 7740 |
| 40° | 3256 | 7290 | 3231 | 7290 |
| 45° | 2948 | 6766 | 2884 | 6766 |
| 50° | 2683 | 6244 | 2673 | 6244 |
| 55° | 2519 | 5664 | 2488 | 5664 |
| 60° | 2109 | 5134 | 2086 | 5134 |
| 65° | 1780 | 4661 | 2017 | 4661 |
| 70° | 1643 | 4164 | 1902 | 4164 |
| 75° | 1535 | 3624 | 1759 | 3624 |
| 80° | 1413 | 2985 | 1562 | 2985 |
| 85° | 1315 | 2353 | 1371 | 2353 |



TEST NUMBER: P331774-935

CATALOG NUMBER: S122RDIW-S290D970U935-4F0-1E-UDD-A1

ZONAL LUMENS:

| Zone | Lumens | % Fixture |
|-----------|--------|-----------|
| 0°-10° | 53.4 | 1.4 |
| 10°-20° | 148.7 | 3.8 |
| 20°-30° | 191.6 | 5.0 |
| 30°-40° | 182.1 | 4.7 |
| 40°-50° | 156.0 | 4.0 |
| 50°-60° | 118.8 | 3.1 |
| 60°-70° | 75.1 | 1.9 |
| 70°-80° | 37.5 | 1.0 |
| 80°-90° | 13.9 | 0.4 |
| 90°-100° | 65.5 | 1.7 |
| 100°-110° | 203.4 | 5.3 |
| 110°-120° | 347.6 | 9.0 |
| 120°-130° | 457.2 | 11.8 |
| 130°-140° | 513.1 | 13.3 |
| 140°-150° | 503.1 | 13.0 |
| 150°-160° | 422.0 | 10.9 |
| 160°-170° | 279.9 | 7.2 |
| 170°-180° | 97.8 | 2.5 |
| 0°-30° | 393.6 | 10.2 |
| 0°-40° | 575.7 | 14.9 |
| 0°-60° | 850.4 | 22.0 |
| 0°-90° | 976.9 | 25.3 |
| 90°-120° | 616.5 | 15.9 |
| 90°-150° | 2089.9 | 54.1 |
| 90°-180° | 2890.0 | 74.7 |
| 0°-180° | 3866.5 | 100.0 |

CANDELA DISTRIBUTION:

| | 0° | 90° | 180° | 270° | 360° | Flux |
|------|------|------|------|------|------|------|
| 0° | 563 | 563 | 563 | 563 | 563 | |
| 5° | 626 | 564 | 500 | 564 | 626 | 62 |
| 15° | 707 | 535 | 331 | 535 | 707 | 191 |
| 25° | 377 | 476 | 240 | 476 | 377 | 179 |
| 35° | 186 | 393 | 177 | 393 | 186 | 119 |
| 45° | 129 | 296 | 126 | 296 | 129 | 100 |
| 55° | 90 | 201 | 88 | 201 | 90 | 79 |
| 65° | 47 | 122 | 53 | 122 | 47 | 47 |
| 75° | 25 | 58 | 28 | 58 | 25 | 26 |
| 85° | 7 | 13 | 7 | 13 | 7 | 8 |
| 90° | 30 | 1 | 30 | 1 | 30 | 13 |
| 95° | 54 | 45 | 54 | 45 | 54 | 60 |
| 105° | 194 | 188 | 194 | 188 | 194 | 204 |
| 115° | 349 | 349 | 349 | 349 | 349 | 344 |
| 125° | 509 | 508 | 509 | 508 | 509 | 454 |
| 135° | 664 | 657 | 664 | 657 | 664 | 511 |
| 145° | 806 | 797 | 806 | 797 | 806 | 503 |
| 155° | 918 | 911 | 918 | 911 | 918 | 423 |
| 165° | 992 | 992 | 992 | 992 | 992 | 280 |
| 175° | 1028 | 1032 | 1028 | 1032 | 1028 | 98 |
| 180° | 1033 | 1033 | 1033 | 1033 | 1033 | |



TEST NUMBER: P331774-935

CATALOG NUMBER: S122RDIW-S290D970U935-4F0-1E-UDD-A1

CANDELA DISTRIBUTION (FULL):

| | 0° | 5° | 10° | 15° | 20° | 25° | 30° | 35° | 40° | 45° | 50° |
|--------|-------|-------|-------|-------|-------|-------|-------|-------|-------|-------|-------|
| 0° | 562.8 | 562.8 | 562.8 | 562.8 | 562.8 | 562.8 | 562.8 | 562.8 | 562.8 | 562.8 | 562.8 |
| 2.5° | 585.7 | 586.2 | 586.7 | 585.6 | 585.6 | 584.6 | 582.6 | 581.0 | 576.6 | 576.0 | 576.0 |
| 5° | 626.2 | 625.9 | 626.6 | 624.1 | 620.6 | 619.7 | 616.0 | 611.1 | 606.1 | 600.5 | 599.3 |
| 7.5° | 666.5 | 665.9 | 664.3 | 663.9 | 661.2 | 655.3 | 649.4 | 643.0 | 634.6 | 626.3 | 622.2 |
| 10° | 686.9 | 693.4 | 689.4 | 682.6 | 683.9 | 674.8 | 669.9 | 661.4 | 654.4 | 642.0 | 639.4 |
| 12.5° | 706.9 | 709.5 | 708.2 | 704.3 | 702.6 | 696.2 | 689.6 | 682.3 | 669.3 | 658.2 | 648.6 |
| 15° | 706.8 | 710.5 | 711.5 | 710.3 | 711.3 | 710.9 | 707.4 | 701.4 | 690.0 | 677.9 | 667.3 |
| 17.5° | 654.6 | 657.2 | 663.7 | 668.0 | 673.5 | 685.0 | 690.8 | 692.9 | 691.3 | 684.3 | 676.9 |
| 20° | 596.2 | 591.9 | 609.8 | 619.0 | 626.8 | 646.4 | 663.2 | 669.7 | 680.0 | 679.8 | 677.9 |
| 22.5° | 513.2 | 514.2 | 531.2 | 542.2 | 565.0 | 584.6 | 603.7 | 628.0 | 648.1 | 661.3 | 669.1 |
| 25° | 377.0 | 384.5 | 401.5 | 416.4 | 441.8 | 478.2 | 511.3 | 549.6 | 585.7 | 614.3 | 641.5 |
| 27.5° | 283.2 | 283.8 | 297.2 | 311.0 | 326.1 | 355.9 | 397.5 | 443.2 | 494.8 | 537.4 | 586.3 |
| 30° | 242.5 | 241.3 | 247.0 | 255.5 | 268.4 | 291.4 | 322.7 | 367.6 | 419.1 | 483.3 | 540.4 |
| 32.5° | 213.7 | 213.8 | 218.1 | 224.3 | 235.0 | 250.6 | 272.0 | 308.6 | 357.1 | 420.3 | 487.2 |
| 35° | 185.8 | 185.6 | 188.7 | 193.2 | 197.7 | 207.7 | 222.4 | 241.5 | 275.0 | 333.8 | 402.3 |
| 37.5° | 165.7 | 166.6 | 168.2 | 171.0 | 175.9 | 181.5 | 190.3 | 203.2 | 227.0 | 261.8 | 319.3 |
| 40° | 154.5 | 154.9 | 157.0 | 159.4 | 162.3 | 166.6 | 173.8 | 184.3 | 201.6 | 229.4 | 271.5 |
| 42.5° | 144.2 | 144.6 | 146.1 | 148.3 | 150.6 | 154.9 | 160.9 | 169.9 | 184.0 | 205.6 | 240.3 |
| 45° | 129.1 | 129.1 | 130.4 | 131.4 | 134.0 | 137.8 | 142.8 | 150.2 | 160.0 | 176.0 | 199.1 |
| 47.5° | 114.9 | 114.9 | 115.9 | 117.5 | 119.2 | 122.2 | 127.0 | 133.1 | 140.2 | 152.6 | 172.3 |
| 50° | 106.8 | 107.0 | 107.5 | 108.9 | 109.9 | 112.6 | 116.4 | 121.7 | 129.1 | 138.7 | 155.1 |
| 52.5° | 100.2 | 100.1 | 100.8 | 101.4 | 102.1 | 104.0 | 106.9 | 111.5 | 118.1 | 126.5 | 140.1 |
| 55° | 89.5 | 88.8 | 90.0 | 90.9 | 91.5 | 92.3 | 93.8 | 96.8 | 102.5 | 109.5 | 119.7 |
| 57.5° | 76.3 | 75.9 | 76.8 | 77.7 | 79.6 | 81.6 | 83.0 | 84.8 | 87.7 | 92.8 | 102.9 |
| 60° | 65.3 | 65.3 | 67.1 | 67.7 | 69.8 | 72.6 | 75.3 | 76.9 | 79.8 | 83.1 | 90.6 |
| 62.5° | 55.6 | 55.8 | 56.6 | 57.2 | 58.4 | 61.7 | 65.6 | 69.1 | 71.8 | 75.0 | 79.9 |
| 65° | 46.6 | 46.9 | 46.9 | 47.4 | 48.1 | 48.9 | 50.5 | 53.2 | 58.1 | 62.6 | 66.3 |
| 67.5° | 39.5 | 39.6 | 39.8 | 40.1 | 40.3 | 41.2 | 41.8 | 43.0 | 44.2 | 48.4 | 53.0 |
| 70° | 34.8 | 35.4 | 35.2 | 35.6 | 35.8 | 36.2 | 36.9 | 37.5 | 39.3 | 40.3 | 43.0 |
| 72.5° | 30.4 | 30.8 | 30.8 | 31.1 | 31.6 | 31.7 | 32.3 | 32.9 | 34.0 | 34.8 | 36.3 |
| 75° | 24.6 | 24.5 | 24.6 | 25.1 | 25.2 | 25.4 | 25.4 | 26.2 | 26.8 | 27.6 | 28.6 |
| 77.5° | 19.0 | 19.2 | 19.2 | 19.2 | 19.3 | 19.6 | 19.5 | 19.9 | 20.5 | 20.9 | 21.4 |
| 80° | 15.2 | 15.4 | 15.2 | 15.4 | 15.7 | 15.8 | 15.7 | 15.8 | 16.4 | 16.8 | 16.8 |
| 82.5° | 11.8 | 11.9 | 12.0 | 12.0 | 12.1 | 12.1 | 12.4 | 12.4 | 12.8 | 12.7 | 12.9 |
| 85° | 7.1 | 6.9 | 6.9 | 6.9 | 7.1 | 7.2 | 7.1 | 7.1 | 7.2 | 7.2 | 7.2 |
| 87.5° | 8.4 | 8.5 | 8.5 | 8.4 | 8.4 | 8.4 | 8.5 | 8.8 | 8.7 | 9.0 | 7.9 |
| 90° | 29.6 | 29.4 | 29.3 | 29.1 | 28.8 | 28.9 | 29.4 | 29.7 | 30.1 | 30.5 | 26.3 |
| 92.5° | 28.2 | 28.2 | 28.2 | 28.2 | 28.1 | 28.1 | 28.0 | 27.9 | 27.8 | 27.7 | 26.7 |
| 95° | 54.1 | 54.4 | 54.8 | 55.2 | 55.6 | 55.8 | 55.8 | 55.8 | 55.8 | 55.8 | 55.4 |
| 97.5° | 93.7 | 93.7 | 93.8 | 93.8 | 93.8 | 93.8 | 93.8 | 93.8 | 93.8 | 93.8 | 93.1 |
| 100° | 119.5 | 119.7 | 119.9 | 120.0 | 120.3 | 120.4 | 120.4 | 120.4 | 120.4 | 120.4 | 119.8 |
| 102.5° | 148.8 | 149.0 | 149.1 | 149.4 | 149.6 | 149.6 | 149.4 | 149.3 | 149.1 | 149.0 | 148.2 |
| 105° | 193.6 | 193.6 | 193.6 | 193.6 | 193.6 | 193.4 | 193.0 | 192.6 | 192.3 | 191.8 | 191.5 |
| 107.5° | 235.8 | 236.7 | 237.5 | 238.5 | 239.4 | 239.7 | 239.6 | 239.4 | 239.3 | 239.1 | 239.1 |
| 110° | 268.6 | 269.1 | 269.8 | 270.4 | 271.0 | 271.2 | 271.2 | 271.2 | 271.2 | 271.2 | 271.2 |



TEST NUMBER: P331774-935

CATALOG NUMBER: S122RDIW-S290D970U935-4F0-1E-UDD-A1

CANDELA DISTRIBUTION (continued):

| | 0° | 5° | 10° | 15° | 20° | 25° | 30° | 35° | 40° | 45° | 50° |
|--------|--------|--------|--------|--------|--------|--------|--------|--------|--------|--------|--------|
| 112.5° | 300.0 | 300.4 | 300.8 | 301.3 | 301.7 | 302.1 | 302.6 | 303.1 | 303.5 | 304.0 | 304.2 |
| 115° | 348.8 | 349.4 | 350.0 | 350.6 | 351.1 | 351.5 | 351.7 | 351.9 | 352.1 | 352.3 | 352.7 |
| 117.5° | 395.4 | 396.0 | 396.6 | 397.2 | 397.7 | 398.2 | 398.7 | 399.2 | 399.7 | 400.1 | 401.2 |
| 120° | 428.2 | 428.8 | 429.4 | 429.9 | 430.5 | 430.8 | 430.8 | 430.8 | 430.8 | 430.8 | 432.4 |
| 122.5° | 460.3 | 460.7 | 461.2 | 461.6 | 462.0 | 462.4 | 462.9 | 463.4 | 463.8 | 464.3 | 465.4 |
| 125° | 509.3 | 509.5 | 509.7 | 509.9 | 510.1 | 510.5 | 511.0 | 511.6 | 512.2 | 512.8 | 513.3 |
| 127.5° | 554.0 | 554.6 | 555.2 | 555.8 | 556.4 | 557.1 | 557.8 | 558.4 | 559.1 | 559.9 | 560.6 |
| 130° | 586.0 | 586.8 | 587.5 | 588.3 | 589.1 | 589.7 | 590.1 | 590.5 | 590.9 | 591.2 | 591.7 |
| 132.5° | 616.7 | 617.3 | 617.9 | 618.6 | 619.2 | 619.9 | 620.8 | 621.6 | 622.5 | 623.4 | 623.3 |
| 135° | 664.5 | 665.1 | 665.6 | 666.2 | 666.8 | 667.2 | 667.4 | 667.6 | 667.8 | 668.0 | 667.6 |
| 137.5° | 707.7 | 708.5 | 709.3 | 710.1 | 710.8 | 711.4 | 711.5 | 711.6 | 711.8 | 712.0 | 711.4 |
| 140° | 737.8 | 738.6 | 739.3 | 740.1 | 740.9 | 741.2 | 741.2 | 741.2 | 741.2 | 741.2 | 740.3 |
| 142.5° | 765.0 | 765.8 | 766.5 | 767.3 | 768.1 | 768.4 | 768.3 | 768.1 | 767.9 | 767.8 | 767.2 |
| 145° | 805.8 | 806.6 | 807.4 | 808.1 | 808.9 | 809.2 | 809.0 | 808.8 | 808.6 | 808.4 | 807.3 |
| 147.5° | 842.2 | 843.0 | 843.7 | 844.5 | 845.2 | 845.3 | 844.9 | 844.5 | 844.0 | 843.6 | 842.8 |
| 150° | 866.0 | 866.5 | 867.1 | 867.7 | 868.3 | 868.3 | 867.7 | 867.1 | 866.5 | 866.0 | 865.2 |
| 152.5° | 888.3 | 889.0 | 889.8 | 890.5 | 891.2 | 891.2 | 890.5 | 889.8 | 889.0 | 888.3 | 887.3 |
| 155° | 918.3 | 918.9 | 919.5 | 920.1 | 920.6 | 920.4 | 919.5 | 918.5 | 917.5 | 916.5 | 915.9 |
| 157.5° | 944.1 | 945.0 | 946.0 | 946.9 | 947.8 | 947.6 | 946.3 | 945.0 | 943.7 | 942.4 | 942.0 |
| 160° | 960.2 | 961.0 | 961.7 | 962.5 | 963.3 | 963.0 | 961.9 | 960.7 | 959.6 | 958.4 | 958.2 |
| 162.5° | 974.1 | 975.0 | 975.9 | 976.9 | 977.8 | 977.7 | 976.3 | 975.0 | 973.7 | 972.3 | 972.2 |
| 165° | 992.4 | 993.4 | 994.4 | 995.3 | 996.3 | 996.1 | 994.7 | 993.4 | 992.0 | 990.7 | 990.7 |
| 167.5° | 1007.5 | 1008.4 | 1009.4 | 1010.5 | 1011.4 | 1011.2 | 1010.0 | 1008.6 | 1007.2 | 1005.8 | 1005.9 |
| 170° | 1015.1 | 1016.2 | 1017.4 | 1018.6 | 1019.8 | 1019.7 | 1018.3 | 1016.9 | 1015.5 | 1014.3 | 1014.4 |
| 172.5° | 1021.4 | 1022.5 | 1023.7 | 1024.8 | 1026.1 | 1025.9 | 1024.6 | 1023.2 | 1021.8 | 1020.5 | 1020.7 |
| 175° | 1028.2 | 1029.3 | 1030.5 | 1031.7 | 1032.9 | 1032.7 | 1031.4 | 1030.0 | 1028.6 | 1027.3 | 1027.7 |
| 177.5° | 1031.3 | 1032.3 | 1033.2 | 1034.1 | 1035.0 | 1035.0 | 1034.1 | 1033.2 | 1032.3 | 1031.3 | 1031.7 |
| 180° | 1033.4 | 1033.4 | 1033.4 | 1033.4 | 1033.4 | 1033.4 | 1033.4 | 1033.4 | 1033.4 | 1033.4 | 1033.4 |



TEST NUMBER: P331774-935

CATALOG NUMBER: S122RDIW-S290D970U935-4F0-1E-UDD-A1

CANDELA DISTRIBUTION (continued):

| | 55° | 60° | 65° | 70° | 75° | 80° | 85° | 90° | 95° | 100° | 105° |
|--------|-------|-------|-------|-------|-------|-------|-------|-------|-------|-------|-------|
| 0° | 562.8 | 562.8 | 562.8 | 562.8 | 562.8 | 562.8 | 562.8 | 562.8 | 562.8 | 562.8 | 562.8 |
| 2.5° | 576.4 | 575.1 | 573.9 | 571.2 | 569.7 | 566.6 | 566.2 | 566.0 | 562.0 | 558.0 | 556.9 |
| 5° | 596.2 | 593.0 | 588.3 | 582.8 | 577.1 | 571.3 | 567.4 | 564.2 | 556.4 | 549.0 | 544.7 |
| 7.5° | 616.0 | 609.3 | 601.2 | 590.9 | 582.2 | 572.6 | 565.3 | 558.9 | 547.8 | 537.1 | 529.9 |
| 10° | 630.9 | 620.0 | 609.2 | 595.0 | 583.8 | 572.8 | 562.7 | 553.9 | 541.4 | 527.3 | 517.3 |
| 12.5° | 640.2 | 628.1 | 613.3 | 599.3 | 584.9 | 570.9 | 557.3 | 546.0 | 531.3 | 516.8 | 505.0 |
| 15° | 652.6 | 639.7 | 621.7 | 601.8 | 583.2 | 565.0 | 549.4 | 535.3 | 516.2 | 498.7 | 484.2 |
| 17.5° | 662.9 | 645.1 | 625.8 | 602.7 | 581.2 | 558.1 | 538.0 | 520.0 | 498.6 | 477.6 | 460.5 |
| 20° | 666.2 | 648.5 | 626.2 | 603.1 | 577.7 | 550.5 | 528.8 | 509.3 | 486.4 | 463.5 | 443.9 |
| 22.5° | 664.1 | 650.4 | 625.6 | 598.0 | 572.0 | 543.5 | 519.0 | 496.3 | 470.9 | 447.5 | 424.9 |
| 25° | 650.3 | 645.6 | 622.2 | 592.0 | 562.3 | 529.3 | 500.8 | 476.0 | 447.1 | 422.1 | 397.4 |
| 27.5° | 618.1 | 628.3 | 613.7 | 581.6 | 548.5 | 513.2 | 481.2 | 453.0 | 422.9 | 394.8 | 370.2 |
| 30° | 587.1 | 610.4 | 604.2 | 574.4 | 537.4 | 502.7 | 466.8 | 437.3 | 405.3 | 376.3 | 352.1 |
| 32.5° | 544.8 | 583.2 | 589.3 | 564.4 | 526.2 | 487.9 | 450.4 | 421.0 | 387.5 | 357.1 | 333.4 |
| 35° | 477.2 | 534.7 | 561.1 | 545.3 | 507.0 | 465.6 | 427.0 | 392.7 | 359.0 | 329.0 | 305.5 |
| 37.5° | 396.7 | 475.0 | 519.0 | 520.1 | 484.9 | 442.0 | 399.8 | 365.8 | 331.4 | 301.9 | 276.5 |
| 40° | 344.4 | 429.3 | 486.6 | 499.3 | 469.6 | 423.3 | 380.6 | 345.9 | 312.4 | 283.4 | 254.3 |
| 42.5° | 297.5 | 382.0 | 452.5 | 474.6 | 451.0 | 404.9 | 362.1 | 326.0 | 293.3 | 265.9 | 236.1 |
| 45° | 240.6 | 314.5 | 392.1 | 431.6 | 418.5 | 375.9 | 330.7 | 296.3 | 265.6 | 241.9 | 213.4 |
| 47.5° | 202.9 | 255.0 | 330.2 | 383.6 | 383.4 | 344.5 | 300.0 | 267.1 | 238.6 | 216.4 | 193.3 |
| 50° | 181.5 | 226.9 | 290.4 | 351.0 | 356.1 | 323.5 | 281.2 | 248.6 | 222.0 | 198.7 | 180.1 |
| 52.5° | 162.2 | 199.7 | 256.8 | 315.0 | 329.4 | 301.1 | 260.1 | 230.0 | 204.1 | 182.7 | 166.9 |
| 55° | 137.1 | 166.1 | 209.5 | 263.8 | 285.8 | 265.8 | 229.4 | 201.2 | 180.3 | 162.3 | 148.6 |
| 57.5° | 116.0 | 137.7 | 172.5 | 216.3 | 241.8 | 229.3 | 199.2 | 176.3 | 158.4 | 142.2 | 131.4 |
| 60° | 102.7 | 120.5 | 150.0 | 186.6 | 214.7 | 206.0 | 180.3 | 159.0 | 143.8 | 129.7 | 119.5 |
| 62.5° | 90.1 | 105.5 | 130.8 | 160.5 | 186.2 | 182.6 | 161.7 | 143.8 | 130.4 | 117.6 | 109.0 |
| 65° | 72.6 | 83.7 | 103.5 | 126.7 | 147.5 | 149.2 | 134.1 | 122.0 | 110.1 | 100.0 | 92.3 |
| 67.5° | 57.8 | 65.1 | 79.0 | 98.6 | 114.1 | 119.7 | 110.5 | 101.2 | 91.7 | 83.9 | 77.2 |
| 70° | 48.7 | 54.6 | 64.7 | 80.6 | 94.9 | 100.7 | 95.4 | 88.2 | 80.0 | 73.5 | 67.8 |
| 72.5° | 39.4 | 45.2 | 52.7 | 64.3 | 76.5 | 82.9 | 81.0 | 75.9 | 69.2 | 63.8 | 58.5 |
| 75° | 29.7 | 31.5 | 36.6 | 44.4 | 54.0 | 59.5 | 60.8 | 58.1 | 52.8 | 48.7 | 45.5 |
| 77.5° | 22.0 | 23.1 | 25.5 | 29.5 | 35.8 | 40.7 | 42.7 | 42.4 | 38.7 | 36.4 | 33.4 |
| 80° | 17.6 | 18.2 | 19.4 | 21.1 | 25.8 | 30.7 | 32.1 | 32.1 | 29.5 | 28.6 | 25.7 |
| 82.5° | 13.3 | 13.8 | 14.6 | 15.5 | 17.7 | 22.0 | 23.5 | 23.8 | 22.2 | 20.9 | 18.6 |
| 85° | 7.7 | 7.4 | 7.8 | 8.4 | 8.8 | 10.0 | 12.3 | 12.7 | 12.3 | 10.8 | 10.2 |
| 87.5° | 7.1 | 6.4 | 5.5 | 4.7 | 4.4 | 4.0 | 4.4 | 4.7 | 4.6 | 4.6 | 4.7 |
| 90° | 22.0 | 17.7 | 13.4 | 10.2 | 7.8 | 5.5 | 3.2 | 0.9 | 3.2 | 5.5 | 7.8 |
| 92.5° | 25.7 | 24.7 | 23.7 | 22.4 | 20.7 | 18.9 | 17.2 | 15.5 | 17.2 | 18.9 | 20.7 |
| 95° | 55.0 | 54.7 | 54.2 | 53.1 | 51.1 | 49.2 | 47.3 | 45.4 | 47.3 | 49.2 | 51.1 |
| 97.5° | 92.4 | 91.6 | 90.9 | 89.6 | 88.0 | 86.3 | 84.6 | 82.8 | 84.6 | 86.3 | 88.0 |
| 100° | 119.2 | 118.6 | 118.0 | 116.9 | 115.4 | 113.8 | 112.3 | 110.7 | 112.3 | 113.8 | 115.4 |
| 102.5° | 147.5 | 146.7 | 146.0 | 145.0 | 143.8 | 142.5 | 141.3 | 140.1 | 141.3 | 142.5 | 143.8 |
| 105° | 191.1 | 190.7 | 190.3 | 189.9 | 189.2 | 188.6 | 188.0 | 187.5 | 188.0 | 188.6 | 189.2 |
| 107.5° | 239.1 | 239.1 | 239.1 | 238.7 | 237.8 | 236.9 | 236.2 | 235.3 | 236.2 | 236.9 | 237.8 |
| 110° | 271.2 | 271.2 | 271.2 | 270.6 | 269.5 | 268.3 | 267.2 | 266.0 | 267.2 | 268.3 | 269.5 |



TEST NUMBER: P331774-935

CATALOG NUMBER: S122RDIW-S290D970U935-4F0-1E-UDD-A1

CANDELA DISTRIBUTION (continued):

| | 55° | 60° | 65° | 70° | 75° | 80° | 85° | 90° | 95° | 100° | 105° |
|--------|--------|--------|--------|--------|--------|--------|--------|--------|--------|--------|--------|
| 112.5° | 304.3 | 304.4 | 304.6 | 304.1 | 303.0 | 301.8 | 300.7 | 299.5 | 300.7 | 301.8 | 303.0 |
| 115° | 353.1 | 353.4 | 353.9 | 353.4 | 352.3 | 351.1 | 350.0 | 348.8 | 350.0 | 351.1 | 352.3 |
| 117.5° | 402.3 | 403.4 | 404.4 | 404.2 | 402.7 | 401.1 | 399.6 | 398.0 | 399.6 | 401.1 | 402.7 |
| 120° | 433.9 | 435.5 | 437.0 | 437.0 | 435.5 | 433.9 | 432.4 | 430.8 | 432.4 | 433.9 | 435.5 |
| 122.5° | 466.5 | 467.5 | 468.6 | 468.2 | 466.4 | 464.5 | 462.7 | 460.8 | 462.7 | 464.5 | 466.4 |
| 125° | 513.9 | 514.5 | 515.1 | 514.5 | 512.8 | 511.0 | 509.3 | 507.6 | 509.3 | 511.0 | 512.8 |
| 127.5° | 561.3 | 562.0 | 562.7 | 561.9 | 559.7 | 557.5 | 555.3 | 553.1 | 555.3 | 557.5 | 559.7 |
| 130° | 592.0 | 592.5 | 592.8 | 591.8 | 589.3 | 586.7 | 584.2 | 581.7 | 584.2 | 586.7 | 589.3 |
| 132.5° | 623.2 | 623.1 | 623.0 | 622.0 | 619.9 | 617.9 | 615.8 | 613.7 | 615.8 | 617.9 | 619.9 |
| 135° | 667.2 | 666.8 | 666.4 | 665.2 | 663.1 | 660.9 | 658.8 | 656.7 | 658.8 | 660.9 | 663.1 |
| 137.5° | 710.9 | 710.4 | 710.0 | 708.8 | 707.1 | 705.3 | 703.6 | 701.8 | 703.6 | 705.3 | 707.1 |
| 140° | 739.3 | 738.4 | 737.4 | 736.0 | 734.3 | 732.5 | 730.8 | 729.0 | 730.8 | 732.5 | 734.3 |
| 142.5° | 766.5 | 765.8 | 765.2 | 764.0 | 762.2 | 760.4 | 758.7 | 757.0 | 758.7 | 760.4 | 762.2 |
| 145° | 806.1 | 804.9 | 803.7 | 802.5 | 801.2 | 799.8 | 798.4 | 797.0 | 798.4 | 799.8 | 801.2 |
| 147.5° | 842.1 | 841.3 | 840.5 | 839.3 | 837.7 | 836.1 | 834.5 | 832.8 | 834.5 | 836.1 | 837.7 |
| 150° | 864.4 | 863.7 | 862.9 | 861.9 | 860.7 | 859.5 | 858.4 | 857.2 | 858.4 | 859.5 | 860.7 |
| 152.5° | 886.4 | 885.5 | 884.6 | 883.6 | 882.4 | 881.2 | 880.0 | 878.9 | 880.0 | 881.2 | 882.4 |
| 155° | 915.4 | 914.8 | 914.2 | 913.6 | 913.1 | 912.5 | 911.9 | 911.3 | 911.9 | 912.5 | 913.1 |
| 157.5° | 941.7 | 941.3 | 941.0 | 940.6 | 940.2 | 939.8 | 939.4 | 939.0 | 939.4 | 939.8 | 940.2 |
| 160° | 958.0 | 957.9 | 957.6 | 957.3 | 956.9 | 956.6 | 956.1 | 955.8 | 956.1 | 956.6 | 956.9 |
| 162.5° | 972.0 | 971.8 | 971.6 | 971.5 | 971.4 | 971.3 | 971.2 | 971.1 | 971.2 | 971.3 | 971.4 |
| 165° | 990.7 | 990.7 | 990.7 | 990.8 | 990.9 | 991.2 | 991.4 | 991.5 | 991.4 | 991.2 | 990.9 |
| 167.5° | 1005.9 | 1006.0 | 1006.0 | 1006.3 | 1006.9 | 1007.5 | 1008.1 | 1008.7 | 1008.1 | 1007.5 | 1006.9 |
| 170° | 1014.6 | 1014.8 | 1015.0 | 1015.4 | 1016.0 | 1016.6 | 1017.1 | 1017.7 | 1017.1 | 1016.6 | 1016.0 |
| 172.5° | 1020.9 | 1021.1 | 1021.2 | 1021.7 | 1022.3 | 1022.8 | 1023.4 | 1024.0 | 1023.4 | 1022.8 | 1022.3 |
| 175° | 1028.0 | 1028.5 | 1028.8 | 1029.3 | 1029.9 | 1030.5 | 1031.0 | 1031.7 | 1031.0 | 1030.5 | 1029.9 |
| 177.5° | 1031.9 | 1032.3 | 1032.5 | 1032.9 | 1033.4 | 1033.9 | 1034.3 | 1034.8 | 1034.3 | 1033.9 | 1033.4 |
| 180° | 1033.4 | 1033.4 | 1033.4 | 1033.4 | 1033.4 | 1033.4 | 1033.4 | 1033.4 | 1033.4 | 1033.4 | 1033.4 |



TEST NUMBER: P331774-935

CATALOG NUMBER: S122RDIW-S290D970U935-4F0-1E-UDD-A1

CANDELA DISTRIBUTION (continued):

| | 110° | 115° | 120° | 125° | 130° | 135° | 140° | 145° | 150° | 155° | 160° |
|--------|-------|-------|-------|-------|-------|-------|-------|-------|-------|-------|-------|
| 0° | 562.8 | 562.8 | 562.8 | 562.8 | 562.8 | 562.8 | 562.8 | 562.8 | 562.8 | 562.8 | 562.8 |
| 2.5° | 554.9 | 553.8 | 551.7 | 548.6 | 546.7 | 543.5 | 541.3 | 542.5 | 542.9 | 542.5 | 542.3 |
| 5° | 540.0 | 535.9 | 530.2 | 524.7 | 519.6 | 514.2 | 511.0 | 509.7 | 507.0 | 505.4 | 504.5 |
| 7.5° | 521.9 | 514.9 | 506.9 | 497.3 | 489.2 | 480.7 | 476.4 | 474.2 | 468.6 | 465.6 | 463.0 |
| 10° | 508.5 | 497.3 | 489.3 | 476.8 | 469.2 | 458.1 | 450.4 | 450.6 | 443.0 | 438.7 | 435.6 |
| 12.5° | 493.6 | 481.4 | 468.0 | 456.8 | 446.2 | 437.2 | 428.0 | 424.3 | 416.2 | 412.1 | 403.6 |
| 15° | 469.0 | 454.7 | 440.7 | 425.4 | 414.7 | 400.7 | 387.4 | 371.2 | 358.1 | 346.7 | 343.6 |
| 17.5° | 442.1 | 424.4 | 410.3 | 392.4 | 373.9 | 350.6 | 335.2 | 325.7 | 317.9 | 311.9 | 307.4 |
| 20° | 423.6 | 405.6 | 390.5 | 363.6 | 338.7 | 322.9 | 311.6 | 304.3 | 296.1 | 289.6 | 286.1 |
| 22.5° | 404.2 | 385.5 | 364.9 | 334.8 | 315.4 | 302.7 | 292.7 | 284.3 | 278.7 | 273.7 | 270.4 |
| 25° | 376.7 | 356.1 | 322.3 | 301.6 | 285.9 | 272.6 | 265.6 | 260.5 | 254.7 | 247.8 | 244.7 |
| 27.5° | 347.6 | 315.0 | 290.6 | 275.2 | 260.3 | 251.7 | 245.3 | 237.7 | 232.5 | 229.4 | 226.1 |
| 30° | 325.8 | 293.2 | 274.2 | 257.4 | 246.8 | 237.2 | 229.8 | 225.5 | 220.4 | 215.2 | 213.0 |
| 32.5° | 301.6 | 275.5 | 257.3 | 243.3 | 232.6 | 224.4 | 218.5 | 211.5 | 207.9 | 204.7 | 200.2 |
| 35° | 271.5 | 251.7 | 235.1 | 223.8 | 213.5 | 206.9 | 200.1 | 196.0 | 189.3 | 186.6 | 184.9 |
| 37.5° | 246.0 | 228.9 | 216.5 | 204.5 | 196.4 | 189.1 | 184.9 | 178.3 | 175.5 | 171.6 | 167.9 |
| 40° | 231.5 | 214.7 | 202.9 | 193.0 | 184.0 | 178.6 | 173.3 | 168.0 | 163.7 | 162.0 | 157.5 |
| 42.5° | 216.9 | 203.2 | 191.2 | 180.6 | 174.5 | 168.7 | 162.0 | 158.2 | 153.7 | 150.8 | 148.1 |
| 45° | 196.6 | 184.4 | 174.3 | 165.5 | 158.8 | 152.7 | 148.4 | 142.0 | 139.5 | 133.8 | 131.4 |
| 47.5° | 178.7 | 167.5 | 157.7 | 149.4 | 142.9 | 139.0 | 132.7 | 127.6 | 123.6 | 120.0 | 117.0 |
| 50° | 166.1 | 156.6 | 147.2 | 139.8 | 134.0 | 128.3 | 121.8 | 119.3 | 113.0 | 111.2 | 109.5 |
| 52.5° | 154.5 | 145.5 | 137.0 | 129.7 | 123.8 | 118.3 | 112.6 | 109.3 | 105.0 | 103.3 | 102.0 |
| 55° | 138.3 | 129.7 | 121.5 | 115.0 | 109.2 | 103.5 | 100.0 | 95.8 | 93.8 | 92.5 | 90.9 |
| 57.5° | 122.0 | 114.3 | 108.0 | 101.4 | 95.5 | 91.0 | 87.0 | 84.5 | 82.5 | 80.7 | 78.8 |
| 60° | 111.7 | 104.3 | 98.6 | 92.5 | 86.4 | 82.7 | 79.6 | 76.6 | 74.3 | 71.5 | 70.8 |
| 62.5° | 100.7 | 94.2 | 89.0 | 83.1 | 77.8 | 74.5 | 71.5 | 68.7 | 65.9 | 61.9 | 60.8 |
| 65° | 85.7 | 80.6 | 75.1 | 70.2 | 65.5 | 62.2 | 57.9 | 54.8 | 53.6 | 53.2 | 53.0 |
| 67.5° | 72.1 | 67.2 | 62.5 | 57.5 | 53.3 | 50.2 | 48.0 | 47.5 | 46.7 | 46.5 | 45.9 |
| 70° | 62.9 | 58.5 | 53.8 | 49.1 | 44.9 | 44.4 | 43.7 | 42.8 | 41.8 | 41.5 | 41.1 |
| 72.5° | 54.8 | 50.2 | 45.5 | 41.8 | 40.0 | 39.3 | 38.5 | 37.6 | 37.0 | 36.6 | 36.4 |
| 75° | 42.0 | 37.7 | 34.6 | 33.2 | 32.3 | 31.7 | 30.5 | 30.0 | 29.5 | 28.9 | 28.8 |
| 77.5° | 30.3 | 27.8 | 26.4 | 25.6 | 24.5 | 23.9 | 23.2 | 22.6 | 22.2 | 22.1 | 21.8 |
| 80° | 23.1 | 21.9 | 20.9 | 19.7 | 19.4 | 18.6 | 18.4 | 17.8 | 18.0 | 17.4 | 17.4 |
| 82.5° | 17.9 | 16.4 | 15.6 | 15.1 | 14.6 | 14.0 | 13.9 | 13.6 | 13.6 | 13.2 | 13.2 |
| 85° | 9.2 | 8.8 | 8.4 | 8.0 | 8.0 | 7.4 | 7.7 | 7.4 | 7.4 | 7.1 | 6.9 |
| 87.5° | 5.0 | 5.5 | 6.0 | 6.9 | 7.7 | 8.4 | 8.4 | 8.2 | 8.1 | 8.0 | 7.8 |
| 90° | 10.2 | 13.4 | 17.7 | 22.0 | 26.3 | 30.5 | 30.1 | 29.7 | 29.4 | 28.9 | 28.8 |
| 92.5° | 22.4 | 23.7 | 24.7 | 25.7 | 26.7 | 27.7 | 27.8 | 27.9 | 28.0 | 28.1 | 28.1 |
| 95° | 53.1 | 54.2 | 54.7 | 55.0 | 55.4 | 55.8 | 55.8 | 55.8 | 55.8 | 55.8 | 55.6 |
| 97.5° | 89.6 | 90.9 | 91.6 | 92.4 | 93.1 | 93.8 | 93.8 | 93.8 | 93.8 | 93.8 | 93.8 |
| 100° | 116.9 | 118.0 | 118.6 | 119.2 | 119.8 | 120.4 | 120.4 | 120.4 | 120.4 | 120.4 | 120.3 |
| 102.5° | 145.0 | 146.0 | 146.7 | 147.5 | 148.2 | 149.0 | 149.1 | 149.3 | 149.4 | 149.6 | 149.6 |
| 105° | 189.9 | 190.3 | 190.7 | 191.1 | 191.5 | 191.8 | 192.3 | 192.6 | 193.0 | 193.4 | 193.6 |
| 107.5° | 238.7 | 239.1 | 239.1 | 239.1 | 239.1 | 239.1 | 239.3 | 239.4 | 239.6 | 239.7 | 239.4 |
| 110° | 270.6 | 271.2 | 271.2 | 271.2 | 271.2 | 271.2 | 271.2 | 271.2 | 271.2 | 271.2 | 271.0 |



TEST NUMBER: P331774-935

CATALOG NUMBER: S122RDIW-S290D970U935-4F0-1E-UDD-A1

CANDELA DISTRIBUTION (continued):

| | 110° | 115° | 120° | 125° | 130° | 135° | 140° | 145° | 150° | 155° | 160° |
|--------|--------|--------|--------|--------|--------|--------|--------|--------|--------|--------|--------|
| 112.5° | 304.1 | 304.6 | 304.4 | 304.3 | 304.2 | 304.0 | 303.5 | 303.1 | 302.6 | 302.1 | 301.7 |
| 115° | 353.4 | 353.9 | 353.4 | 353.1 | 352.7 | 352.3 | 352.1 | 351.9 | 351.7 | 351.5 | 351.1 |
| 117.5° | 404.2 | 404.4 | 403.4 | 402.3 | 401.2 | 400.1 | 399.7 | 399.2 | 398.7 | 398.2 | 397.7 |
| 120° | 437.0 | 437.0 | 435.5 | 433.9 | 432.4 | 430.8 | 430.8 | 430.8 | 430.8 | 430.8 | 430.5 |
| 122.5° | 468.2 | 468.6 | 467.5 | 466.5 | 465.4 | 464.3 | 463.8 | 463.4 | 462.9 | 462.4 | 462.0 |
| 125° | 514.5 | 515.1 | 514.5 | 513.9 | 513.3 | 512.8 | 512.2 | 511.6 | 511.0 | 510.5 | 510.1 |
| 127.5° | 561.9 | 562.7 | 562.0 | 561.3 | 560.6 | 559.9 | 559.1 | 558.4 | 557.8 | 557.1 | 556.4 |
| 130° | 591.8 | 592.8 | 592.5 | 592.0 | 591.7 | 591.2 | 590.9 | 590.5 | 590.1 | 589.7 | 589.1 |
| 132.5° | 622.0 | 623.0 | 623.1 | 623.2 | 623.3 | 623.4 | 622.5 | 621.6 | 620.8 | 619.9 | 619.2 |
| 135° | 665.2 | 666.4 | 666.8 | 667.2 | 667.6 | 668.0 | 667.8 | 667.6 | 667.4 | 667.2 | 666.8 |
| 137.5° | 708.8 | 710.0 | 710.4 | 710.9 | 711.4 | 712.0 | 711.8 | 711.6 | 711.5 | 711.4 | 710.8 |
| 140° | 736.0 | 737.4 | 738.4 | 739.3 | 740.3 | 741.2 | 741.2 | 741.2 | 741.2 | 741.2 | 740.9 |
| 142.5° | 764.0 | 765.2 | 765.8 | 766.5 | 767.2 | 767.8 | 767.9 | 768.1 | 768.3 | 768.4 | 768.1 |
| 145° | 802.5 | 803.7 | 804.9 | 806.1 | 807.3 | 808.4 | 808.6 | 808.8 | 809.0 | 809.2 | 808.9 |
| 147.5° | 839.3 | 840.5 | 841.3 | 842.1 | 842.8 | 843.6 | 844.0 | 844.5 | 844.9 | 845.3 | 845.2 |
| 150° | 861.9 | 862.9 | 863.7 | 864.4 | 865.2 | 866.0 | 866.5 | 867.1 | 867.7 | 868.3 | 868.3 |
| 152.5° | 883.6 | 884.6 | 885.5 | 886.4 | 887.3 | 888.3 | 889.0 | 889.8 | 890.5 | 891.2 | 891.2 |
| 155° | 913.6 | 914.2 | 914.8 | 915.4 | 915.9 | 916.5 | 917.5 | 918.5 | 919.5 | 920.4 | 920.6 |
| 157.5° | 940.6 | 941.0 | 941.3 | 941.7 | 942.0 | 942.4 | 943.7 | 945.0 | 946.3 | 947.6 | 947.8 |
| 160° | 957.3 | 957.6 | 957.9 | 958.0 | 958.2 | 958.4 | 959.6 | 960.7 | 961.9 | 963.0 | 963.3 |
| 162.5° | 971.5 | 971.6 | 971.8 | 972.0 | 972.2 | 972.3 | 973.7 | 975.0 | 976.3 | 977.7 | 977.8 |
| 165° | 990.8 | 990.7 | 990.7 | 990.7 | 990.7 | 990.7 | 992.0 | 993.4 | 994.7 | 996.1 | 996.3 |
| 167.5° | 1006.3 | 1006.0 | 1006.0 | 1005.9 | 1005.9 | 1005.8 | 1007.2 | 1008.6 | 1010.0 | 1011.2 | 1011.4 |
| 170° | 1015.4 | 1015.0 | 1014.8 | 1014.6 | 1014.4 | 1014.3 | 1015.5 | 1016.9 | 1018.3 | 1019.7 | 1019.8 |
| 172.5° | 1021.7 | 1021.2 | 1021.1 | 1020.9 | 1020.7 | 1020.5 | 1021.8 | 1023.2 | 1024.6 | 1025.9 | 1026.1 |
| 175° | 1029.3 | 1028.8 | 1028.5 | 1028.0 | 1027.7 | 1027.3 | 1028.6 | 1030.0 | 1031.4 | 1032.7 | 1032.9 |
| 177.5° | 1032.9 | 1032.5 | 1032.3 | 1031.9 | 1031.7 | 1031.3 | 1032.3 | 1033.2 | 1034.1 | 1035.0 | 1035.0 |
| 180° | 1033.4 | 1033.4 | 1033.4 | 1033.4 | 1033.4 | 1033.4 | 1033.4 | 1033.4 | 1033.4 | 1033.4 | 1033.4 |



TEST NUMBER: P331774-935

CATALOG NUMBER: S122RDIW-S290D970U935-4F0-1E-UDD-A1

CANDELA DISTRIBUTION (continued):

| | 165° | 170° | 175° | 180° | 185° | 190° | 195° | 200° | 205° | 210° | 215° |
|--------|-------|-------|-------|-------|-------|-------|-------|-------|-------|-------|-------|
| 0° | 562.8 | 562.8 | 562.8 | 562.8 | 562.8 | 562.8 | 562.8 | 562.8 | 562.8 | 562.8 | 562.8 |
| 2.5° | 540.5 | 540.8 | 540.4 | 540.6 | 540.4 | 540.8 | 540.5 | 542.3 | 542.5 | 542.9 | 542.5 |
| 5° | 503.6 | 501.3 | 500.8 | 500.3 | 500.8 | 501.3 | 503.6 | 504.5 | 505.4 | 507.0 | 509.7 |
| 7.5° | 459.6 | 459.3 | 458.2 | 456.8 | 458.2 | 459.3 | 459.6 | 463.0 | 465.6 | 468.6 | 474.2 |
| 10° | 431.3 | 430.2 | 430.1 | 428.7 | 430.1 | 430.2 | 431.3 | 435.6 | 438.7 | 443.0 | 450.6 |
| 12.5° | 398.0 | 391.8 | 391.2 | 387.7 | 391.2 | 391.8 | 398.0 | 403.6 | 412.1 | 416.2 | 424.3 |
| 15° | 339.0 | 337.8 | 333.8 | 331.3 | 333.8 | 337.8 | 339.0 | 343.6 | 346.7 | 358.1 | 371.2 |
| 17.5° | 305.1 | 301.3 | 300.1 | 299.5 | 300.1 | 301.3 | 305.1 | 307.4 | 311.9 | 317.9 | 325.7 |
| 20° | 283.4 | 279.9 | 279.3 | 278.9 | 279.3 | 279.9 | 283.4 | 286.1 | 289.6 | 296.1 | 304.3 |
| 22.5° | 268.4 | 264.7 | 263.2 | 262.0 | 263.2 | 264.7 | 268.4 | 270.4 | 273.7 | 278.7 | 284.3 |
| 25° | 242.7 | 241.3 | 240.6 | 240.1 | 240.6 | 241.3 | 242.7 | 244.7 | 247.8 | 254.7 | 260.5 |
| 27.5° | 222.7 | 219.6 | 219.0 | 218.0 | 219.0 | 219.6 | 222.7 | 226.1 | 229.4 | 232.5 | 237.7 |
| 30° | 211.2 | 210.3 | 208.9 | 207.7 | 208.9 | 210.3 | 211.2 | 213.0 | 215.2 | 220.4 | 225.5 |
| 32.5° | 197.8 | 196.9 | 195.7 | 195.2 | 195.7 | 196.9 | 197.8 | 200.2 | 204.7 | 207.9 | 211.5 |
| 35° | 182.9 | 180.1 | 178.9 | 177.2 | 178.9 | 180.1 | 182.9 | 184.9 | 186.6 | 189.3 | 196.0 |
| 37.5° | 167.1 | 165.7 | 164.0 | 164.6 | 164.0 | 165.7 | 167.1 | 167.9 | 171.6 | 175.5 | 178.3 |
| 40° | 154.9 | 153.9 | 153.5 | 153.3 | 153.5 | 153.9 | 154.9 | 157.5 | 162.0 | 163.7 | 168.0 |
| 42.5° | 145.2 | 142.5 | 141.5 | 141.5 | 141.5 | 142.5 | 145.2 | 148.1 | 150.8 | 153.7 | 158.2 |
| 45° | 130.4 | 127.9 | 126.1 | 126.3 | 126.1 | 127.9 | 130.4 | 131.4 | 133.8 | 139.5 | 142.0 |
| 47.5° | 115.4 | 115.3 | 114.2 | 114.5 | 114.2 | 115.3 | 115.4 | 117.0 | 120.0 | 123.6 | 127.6 |
| 50° | 108.1 | 107.0 | 106.2 | 106.4 | 106.2 | 107.0 | 108.1 | 109.5 | 111.2 | 113.0 | 119.3 |
| 52.5° | 101.3 | 100.2 | 99.6 | 100.5 | 99.6 | 100.2 | 101.3 | 102.0 | 103.3 | 105.0 | 109.3 |
| 55° | 90.0 | 88.8 | 88.6 | 88.4 | 88.6 | 88.8 | 90.0 | 90.9 | 92.5 | 93.8 | 95.8 |
| 57.5° | 77.3 | 76.5 | 75.3 | 74.9 | 75.3 | 76.5 | 77.3 | 78.8 | 80.7 | 82.5 | 84.5 |
| 60° | 68.3 | 66.7 | 64.7 | 64.6 | 64.7 | 66.7 | 68.3 | 70.8 | 71.5 | 74.3 | 76.6 |
| 62.5° | 59.9 | 59.7 | 59.2 | 59.2 | 59.2 | 59.7 | 59.9 | 60.8 | 61.9 | 65.9 | 68.7 |
| 65° | 52.6 | 52.4 | 52.6 | 52.8 | 52.6 | 52.4 | 52.6 | 53.0 | 53.2 | 53.6 | 54.8 |
| 67.5° | 45.8 | 45.5 | 45.1 | 45.3 | 45.1 | 45.5 | 45.8 | 45.9 | 46.5 | 46.7 | 47.5 |
| 70° | 40.6 | 40.5 | 40.3 | 40.3 | 40.3 | 40.5 | 40.6 | 41.1 | 41.5 | 41.8 | 42.8 |
| 72.5° | 35.6 | 35.6 | 35.5 | 35.3 | 35.5 | 35.6 | 35.6 | 36.4 | 36.6 | 37.0 | 37.6 |
| 75° | 28.6 | 28.2 | 28.2 | 28.2 | 28.2 | 28.2 | 28.6 | 28.8 | 28.9 | 29.5 | 30.0 |
| 77.5° | 21.8 | 21.5 | 21.4 | 21.2 | 21.4 | 21.5 | 21.8 | 21.8 | 22.1 | 22.2 | 22.6 |
| 80° | 17.2 | 17.0 | 16.8 | 16.8 | 16.8 | 17.0 | 17.2 | 17.4 | 17.4 | 18.0 | 17.8 |
| 82.5° | 13.2 | 12.9 | 12.9 | 12.7 | 12.9 | 12.9 | 13.2 | 13.2 | 13.2 | 13.6 | 13.6 |
| 85° | 7.1 | 7.2 | 7.1 | 7.4 | 7.1 | 7.2 | 7.1 | 6.9 | 7.1 | 7.4 | 7.4 |
| 87.5° | 7.8 | 7.7 | 7.9 | 7.8 | 7.9 | 7.7 | 7.8 | 7.8 | 8.0 | 8.1 | 8.2 |
| 90° | 29.1 | 29.3 | 29.4 | 29.6 | 29.4 | 29.3 | 29.1 | 28.8 | 28.9 | 29.4 | 29.7 |
| 92.5° | 28.2 | 28.2 | 28.2 | 28.2 | 28.2 | 28.2 | 28.2 | 28.1 | 28.1 | 28.0 | 27.9 |
| 95° | 55.2 | 54.8 | 54.4 | 54.1 | 54.4 | 54.8 | 55.2 | 55.6 | 55.8 | 55.8 | 55.8 |
| 97.5° | 93.8 | 93.8 | 93.7 | 93.7 | 93.7 | 93.8 | 93.8 | 93.8 | 93.8 | 93.8 | 93.8 |
| 100° | 120.0 | 119.9 | 119.7 | 119.5 | 119.7 | 119.9 | 120.0 | 120.3 | 120.4 | 120.4 | 120.4 |
| 102.5° | 149.4 | 149.1 | 149.0 | 148.8 | 149.0 | 149.1 | 149.4 | 149.6 | 149.6 | 149.4 | 149.3 |
| 105° | 193.6 | 193.6 | 193.6 | 193.6 | 193.6 | 193.6 | 193.6 | 193.6 | 193.4 | 193.0 | 192.6 |
| 107.5° | 238.5 | 237.5 | 236.7 | 235.8 | 236.7 | 237.5 | 238.5 | 239.4 | 239.7 | 239.6 | 239.4 |
| 110° | 270.4 | 269.8 | 269.1 | 268.6 | 269.1 | 269.8 | 270.4 | 271.0 | 271.2 | 271.2 | 271.2 |



TEST NUMBER: P331774-935

CATALOG NUMBER: S122RDIW-S290D970U935-4F0-1E-UDD-A1

CANDELA DISTRIBUTION (continued):

| | 165° | 170° | 175° | 180° | 185° | 190° | 195° | 200° | 205° | 210° | 215° |
|--------|--------|--------|--------|--------|--------|--------|--------|--------|--------|--------|--------|
| 112.5° | 301.3 | 300.8 | 300.4 | 300.0 | 300.4 | 300.8 | 301.3 | 301.7 | 302.1 | 302.6 | 303.1 |
| 115° | 350.6 | 350.0 | 349.4 | 348.8 | 349.4 | 350.0 | 350.6 | 351.1 | 351.5 | 351.7 | 351.9 |
| 117.5° | 397.2 | 396.6 | 396.0 | 395.4 | 396.0 | 396.6 | 397.2 | 397.7 | 398.2 | 398.7 | 399.2 |
| 120° | 429.9 | 429.4 | 428.8 | 428.2 | 428.8 | 429.4 | 429.9 | 430.5 | 430.8 | 430.8 | 430.8 |
| 122.5° | 461.6 | 461.2 | 460.7 | 460.3 | 460.7 | 461.2 | 461.6 | 462.0 | 462.4 | 462.9 | 463.4 |
| 125° | 509.9 | 509.7 | 509.5 | 509.3 | 509.5 | 509.7 | 509.9 | 510.1 | 510.5 | 511.0 | 511.6 |
| 127.5° | 555.8 | 555.2 | 554.6 | 554.0 | 554.6 | 555.2 | 555.8 | 556.4 | 557.1 | 557.8 | 558.4 |
| 130° | 588.3 | 587.5 | 586.8 | 586.0 | 586.8 | 587.5 | 588.3 | 589.1 | 589.7 | 590.1 | 590.5 |
| 132.5° | 618.6 | 617.9 | 617.3 | 616.7 | 617.3 | 617.9 | 618.6 | 619.2 | 619.9 | 620.8 | 621.6 |
| 135° | 666.2 | 665.6 | 665.1 | 664.5 | 665.1 | 665.6 | 666.2 | 666.8 | 667.2 | 667.4 | 667.6 |
| 137.5° | 710.1 | 709.3 | 708.5 | 707.7 | 708.5 | 709.3 | 710.1 | 710.8 | 711.4 | 711.5 | 711.6 |
| 140° | 740.1 | 739.3 | 738.6 | 737.8 | 738.6 | 739.3 | 740.1 | 740.9 | 741.2 | 741.2 | 741.2 |
| 142.5° | 767.3 | 766.5 | 765.8 | 765.0 | 765.8 | 766.5 | 767.3 | 768.1 | 768.4 | 768.3 | 768.1 |
| 145° | 808.1 | 807.4 | 806.6 | 805.8 | 806.6 | 807.4 | 808.1 | 808.9 | 809.2 | 809.0 | 808.8 |
| 147.5° | 844.5 | 843.7 | 843.0 | 842.2 | 843.0 | 843.7 | 844.5 | 845.2 | 845.3 | 844.9 | 844.5 |
| 150° | 867.7 | 867.1 | 866.5 | 866.0 | 866.5 | 867.1 | 867.7 | 868.3 | 868.3 | 867.7 | 867.1 |
| 152.5° | 890.5 | 889.8 | 889.0 | 888.3 | 889.0 | 889.8 | 890.5 | 891.2 | 891.2 | 890.5 | 889.8 |
| 155° | 920.1 | 919.5 | 918.9 | 918.3 | 918.9 | 919.5 | 920.1 | 920.6 | 920.4 | 919.5 | 918.5 |
| 157.5° | 946.9 | 946.0 | 945.0 | 944.1 | 945.0 | 946.0 | 946.9 | 947.8 | 947.6 | 946.3 | 945.0 |
| 160° | 962.5 | 961.7 | 961.0 | 960.2 | 961.0 | 961.7 | 962.5 | 963.3 | 963.0 | 961.9 | 960.7 |
| 162.5° | 976.9 | 975.9 | 975.0 | 974.1 | 975.0 | 975.9 | 976.9 | 977.8 | 977.7 | 976.3 | 975.0 |
| 165° | 995.3 | 994.4 | 993.4 | 992.4 | 993.4 | 994.4 | 995.3 | 996.3 | 996.1 | 994.7 | 993.4 |
| 167.5° | 1010.5 | 1009.4 | 1008.4 | 1007.5 | 1008.4 | 1009.4 | 1010.5 | 1011.4 | 1011.2 | 1010.0 | 1008.6 |
| 170° | 1018.6 | 1017.4 | 1016.2 | 1015.1 | 1016.2 | 1017.4 | 1018.6 | 1019.8 | 1019.7 | 1018.3 | 1016.9 |
| 172.5° | 1024.8 | 1023.7 | 1022.5 | 1021.4 | 1022.5 | 1023.7 | 1024.8 | 1026.1 | 1025.9 | 1024.6 | 1023.2 |
| 175° | 1031.7 | 1030.5 | 1029.3 | 1028.2 | 1029.3 | 1030.5 | 1031.7 | 1032.9 | 1032.7 | 1031.4 | 1030.0 |
| 177.5° | 1034.1 | 1033.2 | 1032.3 | 1031.3 | 1032.3 | 1033.2 | 1034.1 | 1035.0 | 1035.0 | 1034.1 | 1033.2 |
| 180° | 1033.4 | 1033.4 | 1033.4 | 1033.4 | 1033.4 | 1033.4 | 1033.4 | 1033.4 | 1033.4 | 1033.4 | 1033.4 |



TEST NUMBER: P331774-935

CATALOG NUMBER: S122RDIW-S290D970U935-4F0-1E-UDD-A1

CANDELA DISTRIBUTION (continued):

| | 220° | 225° | 230° | 235° | 240° | 245° | 250° | 255° | 260° | 265° | 270° |
|--------|-------|-------|-------|-------|-------|-------|-------|-------|-------|-------|-------|
| 0° | 562.8 | 562.8 | 562.8 | 562.8 | 562.8 | 562.8 | 562.8 | 562.8 | 562.8 | 562.8 | 562.8 |
| 2.5° | 541.3 | 543.5 | 546.7 | 548.6 | 551.7 | 553.8 | 554.9 | 556.9 | 558.0 | 562.0 | 566.0 |
| 5° | 511.0 | 514.2 | 519.6 | 524.7 | 530.2 | 535.9 | 540.0 | 544.7 | 549.0 | 556.4 | 564.2 |
| 7.5° | 476.4 | 480.7 | 489.2 | 497.3 | 506.9 | 514.9 | 521.9 | 529.9 | 537.1 | 547.8 | 558.9 |
| 10° | 450.4 | 458.1 | 469.2 | 476.8 | 489.3 | 497.3 | 508.5 | 517.3 | 527.3 | 541.4 | 553.9 |
| 12.5° | 428.0 | 437.2 | 446.2 | 456.8 | 468.0 | 481.4 | 493.6 | 505.0 | 516.8 | 531.3 | 546.0 |
| 15° | 387.4 | 400.7 | 414.7 | 425.4 | 440.7 | 454.7 | 469.0 | 484.2 | 498.7 | 516.2 | 535.3 |
| 17.5° | 335.2 | 350.6 | 373.9 | 392.4 | 410.3 | 424.4 | 442.1 | 460.5 | 477.6 | 498.6 | 520.0 |
| 20° | 311.6 | 322.9 | 338.7 | 363.6 | 390.5 | 405.6 | 423.6 | 443.9 | 463.5 | 486.4 | 509.3 |
| 22.5° | 292.7 | 302.7 | 315.4 | 334.8 | 364.9 | 385.5 | 404.2 | 424.9 | 447.5 | 470.9 | 496.3 |
| 25° | 265.6 | 272.6 | 285.9 | 301.6 | 322.3 | 356.1 | 376.7 | 397.4 | 422.1 | 447.1 | 476.0 |
| 27.5° | 245.3 | 251.7 | 260.3 | 275.2 | 290.6 | 315.0 | 347.6 | 370.2 | 394.8 | 422.9 | 453.0 |
| 30° | 229.8 | 237.2 | 246.8 | 257.4 | 274.2 | 293.2 | 325.8 | 352.1 | 376.3 | 405.3 | 437.3 |
| 32.5° | 218.5 | 224.4 | 232.6 | 243.3 | 257.3 | 275.5 | 301.6 | 333.4 | 357.1 | 387.5 | 421.0 |
| 35° | 200.1 | 206.9 | 213.5 | 223.8 | 235.1 | 251.7 | 271.5 | 305.5 | 329.0 | 359.0 | 392.7 |
| 37.5° | 184.9 | 189.1 | 196.4 | 204.5 | 216.5 | 228.9 | 246.0 | 276.5 | 301.9 | 331.4 | 365.8 |
| 40° | 173.3 | 178.6 | 184.0 | 193.0 | 202.9 | 214.7 | 231.5 | 254.3 | 283.4 | 312.4 | 345.9 |
| 42.5° | 162.0 | 168.7 | 174.5 | 180.6 | 191.2 | 203.2 | 216.9 | 236.1 | 265.9 | 293.3 | 326.0 |
| 45° | 148.4 | 152.7 | 158.8 | 165.5 | 174.3 | 184.4 | 196.6 | 213.4 | 241.9 | 265.6 | 296.3 |
| 47.5° | 132.7 | 139.0 | 142.9 | 149.4 | 157.7 | 167.5 | 178.7 | 193.3 | 216.4 | 238.6 | 267.1 |
| 50° | 121.8 | 128.3 | 134.0 | 139.8 | 147.2 | 156.6 | 166.1 | 180.1 | 198.7 | 222.0 | 248.6 |
| 52.5° | 112.6 | 118.3 | 123.8 | 129.7 | 137.0 | 145.5 | 154.5 | 166.9 | 182.7 | 204.1 | 230.0 |
| 55° | 100.0 | 103.5 | 109.2 | 115.0 | 121.5 | 129.7 | 138.3 | 148.6 | 162.3 | 180.3 | 201.2 |
| 57.5° | 87.0 | 91.0 | 95.5 | 101.4 | 108.0 | 114.3 | 122.0 | 131.4 | 142.2 | 158.4 | 176.3 |
| 60° | 79.6 | 82.7 | 86.4 | 92.5 | 98.6 | 104.3 | 111.7 | 119.5 | 129.7 | 143.8 | 159.0 |
| 62.5° | 71.5 | 74.5 | 77.8 | 83.1 | 89.0 | 94.2 | 100.7 | 109.0 | 117.6 | 130.4 | 143.8 |
| 65° | 57.9 | 62.2 | 65.5 | 70.2 | 75.1 | 80.6 | 85.7 | 92.3 | 100.0 | 110.1 | 122.0 |
| 67.5° | 48.0 | 50.2 | 53.3 | 57.5 | 62.5 | 67.2 | 72.1 | 77.2 | 83.9 | 91.7 | 101.2 |
| 70° | 43.7 | 44.4 | 44.9 | 49.1 | 53.8 | 58.5 | 62.9 | 67.8 | 73.5 | 80.0 | 88.2 |
| 72.5° | 38.5 | 39.3 | 40.0 | 41.8 | 45.5 | 50.2 | 54.8 | 58.5 | 63.8 | 69.2 | 75.9 |
| 75° | 30.5 | 31.7 | 32.3 | 33.2 | 34.6 | 37.7 | 42.0 | 45.5 | 48.7 | 52.8 | 58.1 |
| 77.5° | 23.2 | 23.9 | 24.5 | 25.6 | 26.4 | 27.8 | 30.3 | 33.4 | 36.4 | 38.7 | 42.4 |
| 80° | 18.4 | 18.6 | 19.4 | 19.7 | 20.9 | 21.9 | 23.1 | 25.7 | 28.6 | 29.5 | 32.1 |
| 82.5° | 13.9 | 14.0 | 14.6 | 15.1 | 15.6 | 16.4 | 17.9 | 18.6 | 20.9 | 22.2 | 23.8 |
| 85° | 7.7 | 7.4 | 8.0 | 8.0 | 8.4 | 8.8 | 9.2 | 10.2 | 10.8 | 12.3 | 12.7 |
| 87.5° | 8.4 | 8.4 | 7.7 | 6.9 | 6.0 | 5.5 | 5.0 | 4.7 | 4.6 | 4.6 | 4.7 |
| 90° | 30.1 | 30.5 | 26.3 | 22.0 | 17.7 | 13.4 | 10.2 | 7.8 | 5.5 | 3.2 | 0.9 |
| 92.5° | 27.8 | 27.7 | 26.7 | 25.7 | 24.7 | 23.7 | 22.4 | 20.7 | 18.9 | 17.2 | 15.5 |
| 95° | 55.8 | 55.8 | 55.4 | 55.0 | 54.7 | 54.2 | 53.1 | 51.1 | 49.2 | 47.3 | 45.4 |
| 97.5° | 93.8 | 93.8 | 93.1 | 92.4 | 91.6 | 90.9 | 89.6 | 88.0 | 86.3 | 84.6 | 82.8 |
| 100° | 120.4 | 120.4 | 119.8 | 119.2 | 118.6 | 118.0 | 116.9 | 115.4 | 113.8 | 112.3 | 110.7 |
| 102.5° | 149.1 | 149.0 | 148.2 | 147.5 | 146.7 | 146.0 | 145.0 | 143.8 | 142.5 | 141.3 | 140.1 |
| 105° | 192.3 | 191.8 | 191.5 | 191.1 | 190.7 | 190.3 | 189.9 | 189.2 | 188.6 | 188.0 | 187.5 |
| 107.5° | 239.3 | 239.1 | 239.1 | 239.1 | 239.1 | 239.1 | 238.7 | 237.8 | 236.9 | 236.2 | 235.3 |
| 110° | 271.2 | 271.2 | 271.2 | 271.2 | 271.2 | 271.2 | 270.6 | 269.5 | 268.3 | 267.2 | 266.0 |



TEST NUMBER: P331774-935

CATALOG NUMBER: S122RDIW-S290D970U935-4F0-1E-UDD-A1

CANDELA DISTRIBUTION (continued):

| | 220° | 225° | 230° | 235° | 240° | 245° | 250° | 255° | 260° | 265° | 270° |
|--------|--------|--------|--------|--------|--------|--------|--------|--------|--------|--------|--------|
| 112.5° | 303.5 | 304.0 | 304.2 | 304.3 | 304.4 | 304.6 | 304.1 | 303.0 | 301.8 | 300.7 | 299.5 |
| 115° | 352.1 | 352.3 | 352.7 | 353.1 | 353.4 | 353.9 | 353.4 | 352.3 | 351.1 | 350.0 | 348.8 |
| 117.5° | 399.7 | 400.1 | 401.2 | 402.3 | 403.4 | 404.4 | 404.2 | 402.7 | 401.1 | 399.6 | 398.0 |
| 120° | 430.8 | 430.8 | 432.4 | 433.9 | 435.5 | 437.0 | 437.0 | 435.5 | 433.9 | 432.4 | 430.8 |
| 122.5° | 463.8 | 464.3 | 465.4 | 466.5 | 467.5 | 468.6 | 468.2 | 466.4 | 464.5 | 462.7 | 460.8 |
| 125° | 512.2 | 512.8 | 513.3 | 513.9 | 514.5 | 515.1 | 514.5 | 512.8 | 511.0 | 509.3 | 507.6 |
| 127.5° | 559.1 | 559.9 | 560.6 | 561.3 | 562.0 | 562.7 | 561.9 | 559.7 | 557.5 | 555.3 | 553.1 |
| 130° | 590.9 | 591.2 | 591.7 | 592.0 | 592.5 | 592.8 | 591.8 | 589.3 | 586.7 | 584.2 | 581.7 |
| 132.5° | 622.5 | 623.4 | 623.3 | 623.2 | 623.1 | 623.0 | 622.0 | 619.9 | 617.9 | 615.8 | 613.7 |
| 135° | 667.8 | 668.0 | 667.6 | 667.2 | 666.8 | 666.4 | 665.2 | 663.1 | 660.9 | 658.8 | 656.7 |
| 137.5° | 711.8 | 712.0 | 711.4 | 710.9 | 710.4 | 710.0 | 708.8 | 707.1 | 705.3 | 703.6 | 701.8 |
| 140° | 741.2 | 741.2 | 740.3 | 739.3 | 738.4 | 737.4 | 736.0 | 734.3 | 732.5 | 730.8 | 729.0 |
| 142.5° | 767.9 | 767.8 | 767.2 | 766.5 | 765.8 | 765.2 | 764.0 | 762.2 | 760.4 | 758.7 | 757.0 |
| 145° | 808.6 | 808.4 | 807.3 | 806.1 | 804.9 | 803.7 | 802.5 | 801.2 | 799.8 | 798.4 | 797.0 |
| 147.5° | 844.0 | 843.6 | 842.8 | 842.1 | 841.3 | 840.5 | 839.3 | 837.7 | 836.1 | 834.5 | 832.8 |
| 150° | 866.5 | 866.0 | 865.2 | 864.4 | 863.7 | 862.9 | 861.9 | 860.7 | 859.5 | 858.4 | 857.2 |
| 152.5° | 889.0 | 888.3 | 887.3 | 886.4 | 885.5 | 884.6 | 883.6 | 882.4 | 881.2 | 880.0 | 878.9 |
| 155° | 917.5 | 916.5 | 915.9 | 915.4 | 914.8 | 914.2 | 913.6 | 913.1 | 912.5 | 911.9 | 911.3 |
| 157.5° | 943.7 | 942.4 | 942.0 | 941.7 | 941.3 | 941.0 | 940.6 | 940.2 | 939.8 | 939.4 | 939.0 |
| 160° | 959.6 | 958.4 | 958.2 | 958.0 | 957.9 | 957.6 | 957.3 | 956.9 | 956.6 | 956.1 | 955.8 |
| 162.5° | 973.7 | 972.3 | 972.2 | 972.0 | 971.8 | 971.6 | 971.5 | 971.4 | 971.3 | 971.2 | 971.1 |
| 165° | 992.0 | 990.7 | 990.7 | 990.7 | 990.7 | 990.7 | 990.8 | 990.9 | 991.2 | 991.4 | 991.5 |
| 167.5° | 1007.2 | 1005.8 | 1005.9 | 1005.9 | 1006.0 | 1006.0 | 1006.3 | 1006.9 | 1007.5 | 1008.1 | 1008.7 |
| 170° | 1015.5 | 1014.3 | 1014.4 | 1014.6 | 1014.8 | 1015.0 | 1015.4 | 1016.0 | 1016.6 | 1017.1 | 1017.7 |
| 172.5° | 1021.8 | 1020.5 | 1020.7 | 1020.9 | 1021.1 | 1021.2 | 1021.7 | 1022.3 | 1022.8 | 1023.4 | 1024.0 |
| 175° | 1028.6 | 1027.3 | 1027.7 | 1028.0 | 1028.5 | 1028.8 | 1029.3 | 1029.9 | 1030.5 | 1031.0 | 1031.7 |
| 177.5° | 1032.3 | 1031.3 | 1031.7 | 1031.9 | 1032.3 | 1032.5 | 1032.9 | 1033.4 | 1033.9 | 1034.3 | 1034.8 |
| 180° | 1033.4 | 1033.4 | 1033.4 | 1033.4 | 1033.4 | 1033.4 | 1033.4 | 1033.4 | 1033.4 | 1033.4 | 1033.4 |



TEST NUMBER: P331774-935

CATALOG NUMBER: S122RDIW-S290D970U935-4F0-1E-UDD-A1

CANDELA DISTRIBUTION (continued):

| | 275° | 280° | 285° | 290° | 295° | 300° | 305° | 310° | 315° | 320° | 325° |
|--------|-------|-------|-------|-------|-------|-------|-------|-------|-------|-------|-------|
| 0° | 562.8 | 562.8 | 562.8 | 562.8 | 562.8 | 562.8 | 562.8 | 562.8 | 562.8 | 562.8 | 562.8 |
| 2.5° | 566.2 | 566.6 | 569.7 | 571.2 | 573.9 | 575.1 | 576.4 | 576.0 | 576.0 | 576.6 | 581.0 |
| 5° | 567.4 | 571.3 | 577.1 | 582.8 | 588.3 | 593.0 | 596.2 | 599.3 | 600.5 | 606.1 | 611.1 |
| 7.5° | 565.3 | 572.6 | 582.2 | 590.9 | 601.2 | 609.3 | 616.0 | 622.2 | 626.3 | 634.6 | 643.0 |
| 10° | 562.7 | 572.8 | 583.8 | 595.0 | 609.2 | 620.0 | 630.9 | 639.4 | 642.0 | 654.4 | 661.4 |
| 12.5° | 557.3 | 570.9 | 584.9 | 599.3 | 613.3 | 628.1 | 640.2 | 648.6 | 658.2 | 669.3 | 682.3 |
| 15° | 549.4 | 565.0 | 583.2 | 601.8 | 621.7 | 639.7 | 652.6 | 667.3 | 677.9 | 690.0 | 701.4 |
| 17.5° | 538.0 | 558.1 | 581.2 | 602.7 | 625.8 | 645.1 | 662.9 | 676.9 | 684.3 | 691.3 | 692.9 |
| 20° | 528.8 | 550.5 | 577.7 | 603.1 | 626.2 | 648.5 | 666.2 | 677.9 | 679.8 | 680.0 | 669.7 |
| 22.5° | 519.0 | 543.5 | 572.0 | 598.0 | 625.6 | 650.4 | 664.1 | 669.1 | 661.3 | 648.1 | 628.0 |
| 25° | 500.8 | 529.3 | 562.3 | 592.0 | 622.2 | 645.6 | 650.3 | 641.5 | 614.3 | 585.7 | 549.6 |
| 27.5° | 481.2 | 513.2 | 548.5 | 581.6 | 613.7 | 628.3 | 618.1 | 586.3 | 537.4 | 494.8 | 443.2 |
| 30° | 466.8 | 502.7 | 537.4 | 574.4 | 604.2 | 610.4 | 587.1 | 540.4 | 483.3 | 419.1 | 367.6 |
| 32.5° | 450.4 | 487.9 | 526.2 | 564.4 | 589.3 | 583.2 | 544.8 | 487.2 | 420.3 | 357.1 | 308.6 |
| 35° | 427.0 | 465.6 | 507.0 | 545.3 | 561.1 | 534.7 | 477.2 | 402.3 | 333.8 | 275.0 | 241.5 |
| 37.5° | 399.8 | 442.0 | 484.9 | 520.1 | 519.0 | 475.0 | 396.7 | 319.3 | 261.8 | 227.0 | 203.2 |
| 40° | 380.6 | 423.3 | 469.6 | 499.3 | 486.6 | 429.3 | 344.4 | 271.5 | 229.4 | 201.6 | 184.3 |
| 42.5° | 362.1 | 404.9 | 451.0 | 474.6 | 452.5 | 382.0 | 297.5 | 240.3 | 205.6 | 184.0 | 169.9 |
| 45° | 330.7 | 375.9 | 418.5 | 431.6 | 392.1 | 314.5 | 240.6 | 199.1 | 176.0 | 160.0 | 150.2 |
| 47.5° | 300.0 | 344.5 | 383.4 | 383.6 | 330.2 | 255.0 | 202.9 | 172.3 | 152.6 | 140.2 | 133.1 |
| 50° | 281.2 | 323.5 | 356.1 | 351.0 | 290.4 | 226.9 | 181.5 | 155.1 | 138.7 | 129.1 | 121.7 |
| 52.5° | 260.1 | 301.1 | 329.4 | 315.0 | 256.8 | 199.7 | 162.2 | 140.1 | 126.5 | 118.1 | 111.5 |
| 55° | 229.4 | 265.8 | 285.8 | 263.8 | 209.5 | 166.1 | 137.1 | 119.7 | 109.5 | 102.5 | 96.8 |
| 57.5° | 199.2 | 229.3 | 241.8 | 216.3 | 172.5 | 137.7 | 116.0 | 102.9 | 92.8 | 87.7 | 84.8 |
| 60° | 180.3 | 206.0 | 214.7 | 186.6 | 150.0 | 120.5 | 102.7 | 90.6 | 83.1 | 79.8 | 76.9 |
| 62.5° | 161.7 | 182.6 | 186.2 | 160.5 | 130.8 | 105.5 | 90.1 | 79.9 | 75.0 | 71.8 | 69.1 |
| 65° | 134.1 | 149.2 | 147.5 | 126.7 | 103.5 | 83.7 | 72.6 | 66.3 | 62.6 | 58.1 | 53.2 |
| 67.5° | 110.5 | 119.7 | 114.1 | 98.6 | 79.0 | 65.1 | 57.8 | 53.0 | 48.4 | 44.2 | 43.0 |
| 70° | 95.4 | 100.7 | 94.9 | 80.6 | 64.7 | 54.6 | 48.7 | 43.0 | 40.3 | 39.3 | 37.5 |
| 72.5° | 81.0 | 82.9 | 76.5 | 64.3 | 52.7 | 45.2 | 39.4 | 36.3 | 34.8 | 34.0 | 32.9 |
| 75° | 60.8 | 59.5 | 54.0 | 44.4 | 36.6 | 31.5 | 29.7 | 28.6 | 27.6 | 26.8 | 26.2 |
| 77.5° | 42.7 | 40.7 | 35.8 | 29.5 | 25.5 | 23.1 | 22.0 | 21.4 | 20.9 | 20.5 | 19.9 |
| 80° | 32.1 | 30.7 | 25.8 | 21.1 | 19.4 | 18.2 | 17.6 | 16.8 | 16.8 | 16.4 | 15.8 |
| 82.5° | 23.5 | 22.0 | 17.7 | 15.5 | 14.6 | 13.8 | 13.3 | 12.9 | 12.7 | 12.8 | 12.4 |
| 85° | 12.3 | 10.0 | 8.8 | 8.4 | 7.8 | 7.4 | 7.7 | 7.2 | 7.2 | 7.2 | 7.1 |
| 87.5° | 4.4 | 4.0 | 4.4 | 4.7 | 5.5 | 6.4 | 7.1 | 7.9 | 9.0 | 8.7 | 8.8 |
| 90° | 3.2 | 5.5 | 7.8 | 10.2 | 13.4 | 17.7 | 22.0 | 26.3 | 30.5 | 30.1 | 29.7 |
| 92.5° | 17.2 | 18.9 | 20.7 | 22.4 | 23.7 | 24.7 | 25.7 | 26.7 | 27.7 | 27.8 | 27.9 |
| 95° | 47.3 | 49.2 | 51.1 | 53.1 | 54.2 | 54.7 | 55.0 | 55.4 | 55.8 | 55.8 | 55.8 |
| 97.5° | 84.6 | 86.3 | 88.0 | 89.6 | 90.9 | 91.6 | 92.4 | 93.1 | 93.8 | 93.8 | 93.8 |
| 100° | 112.3 | 113.8 | 115.4 | 116.9 | 118.0 | 118.6 | 119.2 | 119.8 | 120.4 | 120.4 | 120.4 |
| 102.5° | 141.3 | 142.5 | 143.8 | 145.0 | 146.0 | 146.7 | 147.5 | 148.2 | 149.0 | 149.1 | 149.3 |
| 105° | 188.0 | 188.6 | 189.2 | 189.9 | 190.3 | 190.7 | 191.1 | 191.5 | 191.8 | 192.3 | 192.6 |
| 107.5° | 236.2 | 236.9 | 237.8 | 238.7 | 239.1 | 239.1 | 239.1 | 239.1 | 239.1 | 239.3 | 239.4 |
| 110° | 267.2 | 268.3 | 269.5 | 270.6 | 271.2 | 271.2 | 271.2 | 271.2 | 271.2 | 271.2 | 271.2 |



TEST NUMBER: P331774-935

CATALOG NUMBER: S122RDIW-S290D970U935-4F0-1E-UDD-A1

CANDELA DISTRIBUTION (continued):

| | 275° | 280° | 285° | 290° | 295° | 300° | 305° | 310° | 315° | 320° | 325° |
|--------|--------|--------|--------|--------|--------|--------|--------|--------|--------|--------|--------|
| 112.5° | 300.7 | 301.8 | 303.0 | 304.1 | 304.6 | 304.4 | 304.3 | 304.2 | 304.0 | 303.5 | 303.1 |
| 115° | 350.0 | 351.1 | 352.3 | 353.4 | 353.9 | 353.4 | 353.1 | 352.7 | 352.3 | 352.1 | 351.9 |
| 117.5° | 399.6 | 401.1 | 402.7 | 404.2 | 404.4 | 403.4 | 402.3 | 401.2 | 400.1 | 399.7 | 399.2 |
| 120° | 432.4 | 433.9 | 435.5 | 437.0 | 437.0 | 435.5 | 433.9 | 432.4 | 430.8 | 430.8 | 430.8 |
| 122.5° | 462.7 | 464.5 | 466.4 | 468.2 | 468.6 | 467.5 | 466.5 | 465.4 | 464.3 | 463.8 | 463.4 |
| 125° | 509.3 | 511.0 | 512.8 | 514.5 | 515.1 | 514.5 | 513.9 | 513.3 | 512.8 | 512.2 | 511.6 |
| 127.5° | 555.3 | 557.5 | 559.7 | 561.9 | 562.7 | 562.0 | 561.3 | 560.6 | 559.9 | 559.1 | 558.4 |
| 130° | 584.2 | 586.7 | 589.3 | 591.8 | 592.8 | 592.5 | 592.0 | 591.7 | 591.2 | 590.9 | 590.5 |
| 132.5° | 615.8 | 617.9 | 619.9 | 622.0 | 623.0 | 623.1 | 623.2 | 623.3 | 623.4 | 622.5 | 621.6 |
| 135° | 658.8 | 660.9 | 663.1 | 665.2 | 666.4 | 666.8 | 667.2 | 667.6 | 668.0 | 667.8 | 667.6 |
| 137.5° | 703.6 | 705.3 | 707.1 | 708.8 | 710.0 | 710.4 | 710.9 | 711.4 | 712.0 | 711.8 | 711.6 |
| 140° | 730.8 | 732.5 | 734.3 | 736.0 | 737.4 | 738.4 | 739.3 | 740.3 | 741.2 | 741.2 | 741.2 |
| 142.5° | 758.7 | 760.4 | 762.2 | 764.0 | 765.2 | 765.8 | 766.5 | 767.2 | 767.8 | 767.9 | 768.1 |
| 145° | 798.4 | 799.8 | 801.2 | 802.5 | 803.7 | 804.9 | 806.1 | 807.3 | 808.4 | 808.6 | 808.8 |
| 147.5° | 834.5 | 836.1 | 837.7 | 839.3 | 840.5 | 841.3 | 842.1 | 842.8 | 843.6 | 844.0 | 844.5 |
| 150° | 858.4 | 859.5 | 860.7 | 861.9 | 862.9 | 863.7 | 864.4 | 865.2 | 866.0 | 866.5 | 867.1 |
| 152.5° | 880.0 | 881.2 | 882.4 | 883.6 | 884.6 | 885.5 | 886.4 | 887.3 | 888.3 | 889.0 | 889.8 |
| 155° | 911.9 | 912.5 | 913.1 | 913.6 | 914.2 | 914.8 | 915.4 | 915.9 | 916.5 | 917.5 | 918.5 |
| 157.5° | 939.4 | 939.8 | 940.2 | 940.6 | 941.0 | 941.3 | 941.7 | 942.0 | 942.4 | 943.7 | 945.0 |
| 160° | 956.1 | 956.6 | 956.9 | 957.3 | 957.6 | 957.9 | 958.0 | 958.2 | 958.4 | 959.6 | 960.7 |
| 162.5° | 971.2 | 971.3 | 971.4 | 971.5 | 971.6 | 971.8 | 972.0 | 972.2 | 972.3 | 973.7 | 975.0 |
| 165° | 991.4 | 991.2 | 990.9 | 990.8 | 990.7 | 990.7 | 990.7 | 990.7 | 990.7 | 992.0 | 993.4 |
| 167.5° | 1008.1 | 1007.5 | 1006.9 | 1006.3 | 1006.0 | 1006.0 | 1005.9 | 1005.9 | 1005.8 | 1007.2 | 1008.6 |
| 170° | 1017.1 | 1016.6 | 1016.0 | 1015.4 | 1015.0 | 1014.8 | 1014.6 | 1014.4 | 1014.3 | 1015.5 | 1016.9 |
| 172.5° | 1023.4 | 1022.8 | 1022.3 | 1021.7 | 1021.2 | 1021.1 | 1020.9 | 1020.7 | 1020.5 | 1021.8 | 1023.2 |
| 175° | 1031.0 | 1030.5 | 1029.9 | 1029.3 | 1028.8 | 1028.5 | 1028.0 | 1027.7 | 1027.3 | 1028.6 | 1030.0 |
| 177.5° | 1034.3 | 1033.9 | 1033.4 | 1032.9 | 1032.5 | 1032.3 | 1031.9 | 1031.7 | 1031.3 | 1032.3 | 1033.2 |
| 180° | 1033.4 | 1033.4 | 1033.4 | 1033.4 | 1033.4 | 1033.4 | 1033.4 | 1033.4 | 1033.4 | 1033.4 | 1033.4 |



TEST NUMBER: P331774-935

CATALOG NUMBER: S122RDIW-S290D970U935-4F0-1E-UDD-A1

CANDELA DISTRIBUTION (continued):

| | 330° | 335° | 340° | 345° | 350° | 355° | 360° |
|--------|-------|-------|-------|-------|-------|-------|-------|
| 0° | 562.8 | 562.8 | 562.8 | 562.8 | 562.8 | 562.8 | 562.8 |
| 2.5° | 582.6 | 584.6 | 585.6 | 585.6 | 586.7 | 586.2 | 585.7 |
| 5° | 616.0 | 619.7 | 620.6 | 624.1 | 626.6 | 625.9 | 626.2 |
| 7.5° | 649.4 | 655.3 | 661.2 | 663.9 | 664.3 | 665.9 | 666.5 |
| 10° | 669.9 | 674.8 | 683.9 | 682.6 | 689.4 | 693.4 | 686.9 |
| 12.5° | 689.6 | 696.2 | 702.6 | 704.3 | 708.2 | 709.5 | 706.9 |
| 15° | 707.4 | 710.9 | 711.3 | 710.3 | 711.5 | 710.5 | 706.8 |
| 17.5° | 690.8 | 685.0 | 673.5 | 668.0 | 663.7 | 657.2 | 654.6 |
| 20° | 663.2 | 646.4 | 626.8 | 619.0 | 609.8 | 591.9 | 596.2 |
| 22.5° | 603.7 | 584.6 | 565.0 | 542.2 | 531.2 | 514.2 | 513.2 |
| 25° | 511.3 | 478.2 | 441.8 | 416.4 | 401.5 | 384.5 | 377.0 |
| 27.5° | 397.5 | 355.9 | 326.1 | 311.0 | 297.2 | 283.8 | 283.2 |
| 30° | 322.7 | 291.4 | 268.4 | 255.5 | 247.0 | 241.3 | 242.5 |
| 32.5° | 272.0 | 250.6 | 235.0 | 224.3 | 218.1 | 213.8 | 213.7 |
| 35° | 222.4 | 207.7 | 197.7 | 193.2 | 188.7 | 185.6 | 185.8 |
| 37.5° | 190.3 | 181.5 | 175.9 | 171.0 | 168.2 | 166.6 | 165.7 |
| 40° | 173.8 | 166.6 | 162.3 | 159.4 | 157.0 | 154.9 | 154.5 |
| 42.5° | 160.9 | 154.9 | 150.6 | 148.3 | 146.1 | 144.6 | 144.2 |
| 45° | 142.8 | 137.8 | 134.0 | 131.4 | 130.4 | 129.1 | 129.1 |
| 47.5° | 127.0 | 122.2 | 119.2 | 117.5 | 115.9 | 114.9 | 114.9 |
| 50° | 116.4 | 112.6 | 109.9 | 108.9 | 107.5 | 107.0 | 106.8 |
| 52.5° | 106.9 | 104.0 | 102.1 | 101.4 | 100.8 | 100.1 | 100.2 |
| 55° | 93.8 | 92.3 | 91.5 | 90.9 | 90.0 | 88.8 | 89.5 |
| 57.5° | 83.0 | 81.6 | 79.6 | 77.7 | 76.8 | 75.9 | 76.3 |
| 60° | 75.3 | 72.6 | 69.8 | 67.7 | 67.1 | 65.3 | 65.3 |
| 62.5° | 65.6 | 61.7 | 58.4 | 57.2 | 56.6 | 55.8 | 55.6 |
| 65° | 50.5 | 48.9 | 48.1 | 47.4 | 46.9 | 46.9 | 46.6 |
| 67.5° | 41.8 | 41.2 | 40.3 | 40.1 | 39.8 | 39.6 | 39.5 |
| 70° | 36.9 | 36.2 | 35.8 | 35.6 | 35.2 | 35.4 | 34.8 |
| 72.5° | 32.3 | 31.7 | 31.6 | 31.1 | 30.8 | 30.8 | 30.4 |
| 75° | 25.4 | 25.4 | 25.2 | 25.1 | 24.6 | 24.5 | 24.6 |
| 77.5° | 19.5 | 19.6 | 19.3 | 19.2 | 19.2 | 19.2 | 19.0 |
| 80° | 15.7 | 15.8 | 15.7 | 15.4 | 15.2 | 15.4 | 15.2 |
| 82.5° | 12.4 | 12.1 | 12.1 | 12.0 | 12.0 | 11.9 | 11.8 |
| 85° | 7.1 | 7.2 | 7.1 | 6.9 | 6.9 | 6.9 | 7.1 |
| 87.5° | 8.5 | 8.4 | 8.4 | 8.4 | 8.5 | 8.5 | 8.4 |
| 90° | 29.4 | 28.9 | 28.8 | 29.1 | 29.3 | 29.4 | 29.6 |
| 92.5° | 28.0 | 28.1 | 28.1 | 28.2 | 28.2 | 28.2 | 28.2 |
| 95° | 55.8 | 55.8 | 55.6 | 55.2 | 54.8 | 54.4 | 54.1 |
| 97.5° | 93.8 | 93.8 | 93.8 | 93.8 | 93.8 | 93.7 | 93.7 |
| 100° | 120.4 | 120.4 | 120.3 | 120.0 | 119.9 | 119.7 | 119.5 |
| 102.5° | 149.4 | 149.6 | 149.6 | 149.4 | 149.1 | 149.0 | 148.8 |
| 105° | 193.0 | 193.4 | 193.6 | 193.6 | 193.6 | 193.6 | 193.6 |
| 107.5° | 239.6 | 239.7 | 239.4 | 238.5 | 237.5 | 236.7 | 235.8 |
| 110° | 271.2 | 271.2 | 271.0 | 270.4 | 269.8 | 269.1 | 268.6 |



TEST NUMBER: P331774-935

CATALOG NUMBER: S122RDIW-S290D970U935-4F0-1E-UDD-A1

CANDELA DISTRIBUTION (continued):

| | 330° | 335° | 340° | 345° | 350° | 355° | 360° |
|--------|--------|--------|--------|--------|--------|--------|--------|
| 112.5° | 302.6 | 302.1 | 301.7 | 301.3 | 300.8 | 300.4 | 300.0 |
| 115° | 351.7 | 351.5 | 351.1 | 350.6 | 350.0 | 349.4 | 348.8 |
| 117.5° | 398.7 | 398.2 | 397.7 | 397.2 | 396.6 | 396.0 | 395.4 |
| 120° | 430.8 | 430.8 | 430.5 | 429.9 | 429.4 | 428.8 | 428.2 |
| 122.5° | 462.9 | 462.4 | 462.0 | 461.6 | 461.2 | 460.7 | 460.3 |
| 125° | 511.0 | 510.5 | 510.1 | 509.9 | 509.7 | 509.5 | 509.3 |
| 127.5° | 557.8 | 557.1 | 556.4 | 555.8 | 555.2 | 554.6 | 554.0 |
| 130° | 590.1 | 589.7 | 589.1 | 588.3 | 587.5 | 586.8 | 586.0 |
| 132.5° | 620.8 | 619.9 | 619.2 | 618.6 | 617.9 | 617.3 | 616.7 |
| 135° | 667.4 | 667.2 | 666.8 | 666.2 | 665.6 | 665.1 | 664.5 |
| 137.5° | 711.5 | 711.4 | 710.8 | 710.1 | 709.3 | 708.5 | 707.7 |
| 140° | 741.2 | 741.2 | 740.9 | 740.1 | 739.3 | 738.6 | 737.8 |
| 142.5° | 768.3 | 768.4 | 768.1 | 767.3 | 766.5 | 765.8 | 765.0 |
| 145° | 809.0 | 809.2 | 808.9 | 808.1 | 807.4 | 806.6 | 805.8 |
| 147.5° | 844.9 | 845.3 | 845.2 | 844.5 | 843.7 | 843.0 | 842.2 |
| 150° | 867.7 | 868.3 | 868.3 | 867.7 | 867.1 | 866.5 | 866.0 |
| 152.5° | 890.5 | 891.2 | 891.2 | 890.5 | 889.8 | 889.0 | 888.3 |
| 155° | 919.5 | 920.4 | 920.6 | 920.1 | 919.5 | 918.9 | 918.3 |
| 157.5° | 946.3 | 947.6 | 947.8 | 946.9 | 946.0 | 945.0 | 944.1 |
| 160° | 961.9 | 963.0 | 963.3 | 962.5 | 961.7 | 961.0 | 960.2 |
| 162.5° | 976.3 | 977.7 | 977.8 | 976.9 | 975.9 | 975.0 | 974.1 |
| 165° | 994.7 | 996.1 | 996.3 | 995.3 | 994.4 | 993.4 | 992.4 |
| 167.5° | 1010.0 | 1011.2 | 1011.4 | 1010.5 | 1009.4 | 1008.4 | 1007.5 |
| 170° | 1018.3 | 1019.7 | 1019.8 | 1018.6 | 1017.4 | 1016.2 | 1015.1 |
| 172.5° | 1024.6 | 1025.9 | 1026.1 | 1024.8 | 1023.7 | 1022.5 | 1021.4 |
| 175° | 1031.4 | 1032.7 | 1032.9 | 1031.7 | 1030.5 | 1029.3 | 1028.2 |
| 177.5° | 1034.1 | 1035.0 | 1035.0 | 1034.1 | 1033.2 | 1032.3 | 1031.3 |
| 180° | 1033.4 | 1033.4 | 1033.4 | 1033.4 | 1033.4 | 1033.4 | 1033.4 |

(END OF REPORT)